

For Research Use Only

MCCC1 Polyclonal antibody

Catalog Number: 30081-1-AP



Basic Information

Catalog Number: 30081-1-AP	GenBank Accession Number: BC004187	Purification Method: Antigen affinity purification
Size: 150ul, Concentration: 500 ug/ml by Nanodrop;	GeneID (NCBI): 56922	Recommended Dilutions: WB 1:1000-1:4000
Source: Rabbit	UNIPROT ID: Q96RQ3	IHC 1:200-1:800
Isotype: IgG	Full Name: methylcrotonoyl-Coenzyme A carboxylase 1 (alpha)	IF/ICC 1:50-1:500
Immunogen Catalog Number: AG32459	Calculated MW: 76 kDa	
	Observed MW: 70 kDa	

Applications

Tested Applications: WB, IHC, IF/ICC, ELISA	Positive Controls:
Species Specificity: human, mouse, rat	WB : HepG2 cells, mouse brain tissue, mouse heart tissue, rat brain tissue
Note-IHC: suggested antigen retrieval with TE buffer pH 9.0; (*) Alternatively, antigen retrieval may be performed with citrate buffer pH 6.0	IHC : human ovary cancer tissue, human intrahepatic cholangiocarcinoma tissue, human stomach cancer tissue
	IF/ICC : U-251 cells, MCF-7 cells

Background Information

MCCC1 is the large subunit of 3-methylcrotonyl-CoA carboxylase. This enzyme functions as a heterodimer and catalyzes the carboxylation of 3-methylcrotonyl-CoA to form 3-methylglutaconyl-CoA. Mutations in this gene are associated with 3-Methylcrotonylglycinuria, an autosomal recessive disorder of leucine catabolism.

Storage

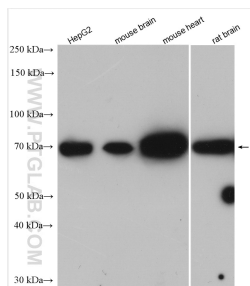
Storage:
Store at -20°C. Stable for one year after shipment.
Storage Buffer:
PBS with 0.02% sodium azide and 50% glycerol pH 7.3.
Aliquoting is unnecessary for -20°C storage

*** 20ul sizes contain 0.1% BSA

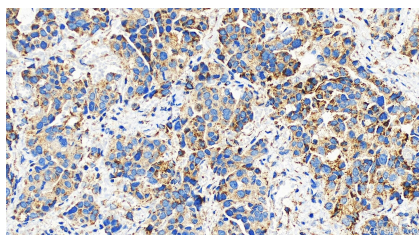
For technical support and original validation data for this product please contact:
T: 1 (888) 4PTGLAB (1-888-478-4522) (toll free in USA), or 1(312) 455-8498 (outside USA)
E: proteintech@ptglab.com
W: ptglab.com

This product is exclusively available under Proteintech Group brand and is not available to purchase from any other manufacturer.

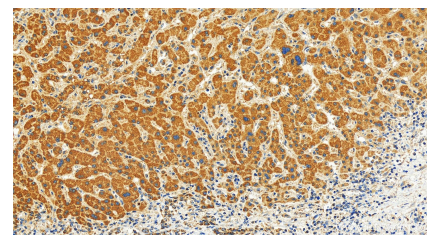
Selected Validation Data



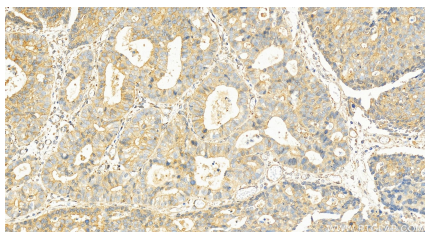
Various lysates were subjected to SDS PAGE followed by western blot with 30081-1-AP (MCCC1 antibody) at dilution of 1:2000 incubated at room temperature for 1.5 hours.



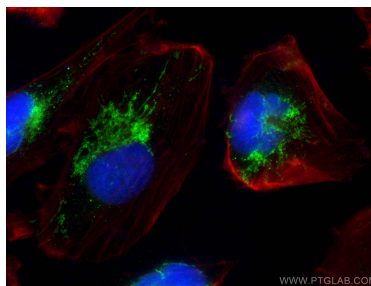
Immunohistochemical analysis of paraffin-embedded human ovary cancer tissue slide using 30081-1-AP (MCCC1 antibody) at dilution of 1:400 (under 20x lens). Heat mediated antigen retrieval with Tris-EDTA buffer (pH 9.0).



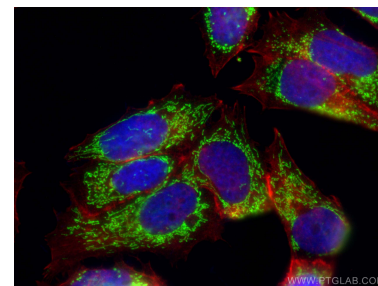
Immunohistochemical analysis of paraffin-embedded human intrahepatic cholangiocarcinoma tissue slide using 30081-1-AP (MCCC1 antibody) at dilution of 1:400 (under 20x lens). Heat mediated antigen retrieval with Tris-EDTA buffer (pH 9.0).



Immunohistochemical analysis of paraffin-embedded human stomach cancer tissue slide using 30081-1-AP (MCCC1 antibody) at dilution of 1:400 (under 20x lens). Heat mediated antigen retrieval with Tris-EDTA buffer (pH 9.0).



Immunofluorescent analysis of (4% PFA) fixed U-251 cells using MCCC1 antibody (30081-1-AP) at dilution of 1:200 and CoraLite@488-Conjugated AffiniPure Goat Anti-Rabbit IgG(H+L) (SA00013-2), CL594-phalloidin (red).



Immunofluorescent analysis of (4% PFA) fixed MCF-7 cells using MCCC1 antibody (30081-1-AP) at dilution of 1:200 and CoraLite@488-Conjugated AffiniPure Goat Anti-Rabbit IgG(H+L) (SA00013-2), CL594-phalloidin (red).