

For Research Use Only

# PLCD4 Polyclonal antibody

Catalog Number: 30133-1-AP

Featured Product



## Basic Information

Catalog Number:

30133-1-AP

Size:

150ul, Concentration: 400 ug/ml by Nanodrop;

Source:

Rabbit

Isotype:

IgG

Immunogen Catalog Number:

AG32651

GenBank Accession Number:

BC006355

GeneID (NCBI):

84812

UNIPROT ID:

Q9BRC7

Full Name:

phospholipase C, delta 4

Calculated MW:

85-90 kDa

Observed MW:

90 kDa

Purification Method:

Antigen affinity purification

Recommended Dilutions:

WB 1:500-1:2000

IHC 1:50-1:500

## Applications

Tested Applications:

WB, IHC, ELISA

Species Specificity:

Human, rat, mouse

**Note-IHC: suggested antigen retrieval with TE buffer pH 9.0; (\*) Alternatively, antigen retrieval may be performed with citrate buffer pH 6.0**

Positive Controls:

WB : HeLa cells, rat testis tissue, human testis tissue

IHC : mouse testis tissue, human pancreas cancer tissue

## Background Information

PLCD4(1-phosphatidylinositol 4,5-bisphosphate phosphodiesterase delta-4), also known as hPLCD4. It is highly expressed in skeletal muscle and kidney tissues. It may be an important enzyme for intracellular  $Ca^{2+}$  mobilization in the zona pellucida-induced acrosome reaction. PLCD4 cooperates with nuclear PKC to regulate liver regeneration. Overexpression of PLCD4 upregulates Erk signaling pathway and proliferation (PMID: 15140260).

## Storage

Storage:

Store at -20°C. Stable for one year after shipment.

Storage Buffer:

PBS with 0.02% sodium azide and 50% glycerol pH 7.3.

Aliquoting is unnecessary for -20°C storage

\*\*\* 20ul sizes contain 0.1% BSA

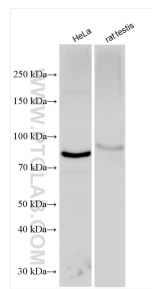
For technical support and original validation data for this product please contact:

T: 1 (888) 4PTGLAB (1-888-478-4522) (toll free in USA), or 1(312) 455-8498 (outside USA)

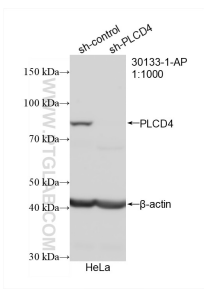
E: [proteintech@ptglab.com](mailto:proteintech@ptglab.com)  
W: [ptglab.com](http://ptglab.com)

This product is exclusively available under Proteintech Group brand and is not available to purchase from any other manufacturer.

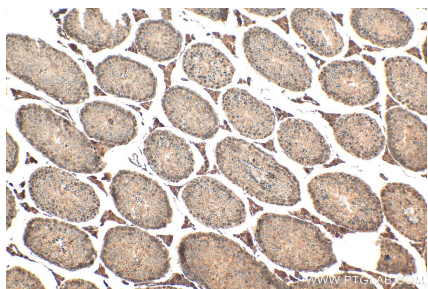
Selected Validation Data



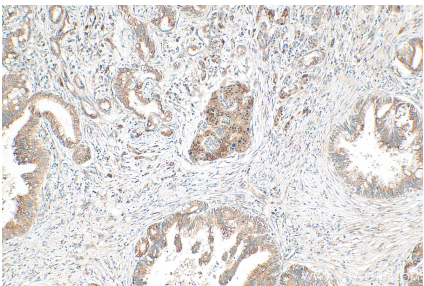
HeLa cells were subjected to SDS PAGE followed by western blot with 30133-1-AP (PLCD4 antibody) at dilution of 1:1000 incubated at room temperature for 1.5 hours.



WB result of PLCD4 antibody (30133-1-AP; 1:1000; incubated at room temperature for 1.5 hours) with sh-Control and sh-PLCD4 transfected HeLa cells.



Immunohistochemical analysis of paraffin-embedded mouse testis tissue slide using 30133-1-AP (PLCD4 antibody) at dilution of 1:200 (under 10x lens). Heat mediated antigen retrieval with Tris-EDTA buffer (pH 9.0).



Immunohistochemical analysis of paraffin-embedded human pancreas cancer tissue slide using 30133-1-AP (PLCD4 antibody) at dilution of 1:200 (under 10x lens). Heat mediated antigen retrieval with Tris-EDTA buffer (pH 9.0).