

For Research Use Only

WDR43 Polyclonal antibody

Catalog Number: 30227-1-AP



Basic Information

Catalog Number:

30227-1-AP

Size:

150ul , Concentration: 500 ug/ml by Nanodrop;

Source:

Rabbit

Isotype:

IgG

Immunogen Catalog Number:

AG30585

GenBank Accession Number:

NM_015131

GeneID (NCBI):

23160

UNIPROT ID:

Q15061

Full Name:

WD repeat domain 43

Calculated MW:

75 kDa

Observed MW:

75 kDa

Purification Method:

Antigen affinity purification

Recommended Dilutions:

WB 1:1000-1:4000

Applications

Tested Applications:

WB, ELISA

Species Specificity:

Human

Positive Controls:

WB : HCT 116 cells, HeLa cells, HepG2 cells, Jurkat cells

Background Information

WDR43, a WD40 domain-containing protein, is a conserved component of the small-subunit processome (SSUP), which mediates pre-18S ribosomal RNA (rRNA) transcription and processing in the nucleolus and is critical for ribosome biogenesis in yeast. Its mutation in zebrafish causes a variety of early developmental defects in specific tissues. WDR43 directly promotes ESC self-renewal by maintaining high-level expression of its target genes involved in pluripotency programs. (PMID: 28880863, 24497835, 31128943)

Storage

Storage:

Store at -20°C. Stable for one year after shipment.

Storage Buffer:

PBS with 0.02% sodium azide and 50% glycerol pH 7.3.

Aliquoting is unnecessary for -20°C storage

*** 20ul sizes contain 0.1% BSA

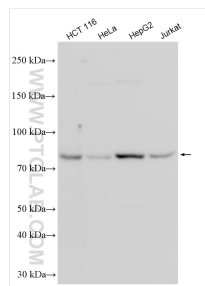
For technical support and original validation data for this product please contact:

T: 1 (888) 4PTGLAB (1-888-478-4522) (toll free in USA), or 1(312) 455-8498 (outside USA)

E: proteintech@ptglab.com
W: ptglab.com

This product is exclusively available under Proteintech Group brand and is not available to purchase from any other manufacturer.

Selected Validation Data



Various lysates were subjected to SDS PAGE followed by western blot with 30227-1-AP (WDR43 antibody) at dilution of 1:2000 incubated at room temperature for 1.5 hours.