

For Research Use Only

CCBL1 Polyclonal antibody

Catalog Number: 30296-1-AP



Basic Information

Catalog Number:

30296-1-AP

Size:

150ul , Concentration: 500 ug/ml by Nanodrop;

Source:

Rabbit

Isotype:

IgG

Immunogen Catalog Number:

AG32316

GenBank Accession Number:

BC033685

GeneID (NCBI):

883

UNIPROT ID:

Q16773

Full Name:

cysteine conjugate-beta lyase, cytoplasmic

Observed MW:

48 kDa

Purification Method:

Antigen affinity purification

Recommended Dilutions:

WB 1:500-1:3000

IF/ICC 1:50-1:500

Applications

Tested Applications:

WB, IF/ICC, ELISA

Species Specificity:

human

Positive Controls:

WB : HEK-293 cells, HeLa cells, U-87 MG cells

IF/ICC : HeLa cells,

Background Information

CCBL1 encodes kynurenine aminotransferase 1 (KAT1), a key enzyme involved in kynurenine pathway. CCBL1 catalyzes the production of kynurenic acid, a powerful endogenous excitatory amino acid receptor antagonist that is widely regarded as the potent neuroprotective agent.

Storage

Storage:

Store at -20°C. Stable for one year after shipment.

Storage Buffer:

PBS with 0.02% sodium azide and 50% glycerol, pH7.3

Aliquoting is unnecessary for -20°C storage

*** 20ul sizes contain 0.1% BSA

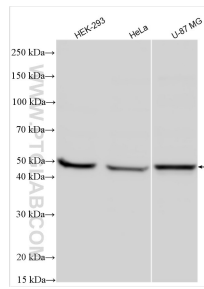
For technical support and original validation data for this product please contact:

T: 1 (888) 4PTGLAB (1-888-478-4522) (toll free in USA), or 1(312) 455-8498 (outside USA)

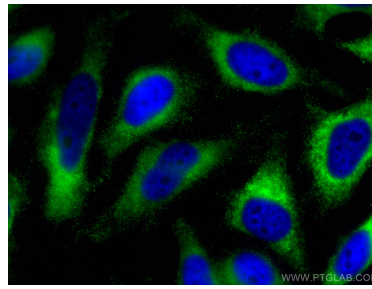
E: proteintech@ptglab.com
W: ptglab.com

This product is exclusively available under Proteintech Group brand and is not available to purchase from any other manufacturer.

Selected Validation Data



Various lysates were subjected to SDS PAGE followed by western blot with 30296-1-AP (CCBL1 antibody) at dilution of 1:1500 incubated at room temperature for 1.5 hours.



Immunofluorescent analysis of (-20°C Ethanol) fixed HeLa cells using CCBL1 antibody (30296-1-AP) at dilution of 1:200 and CoraLite® 488-Conjugated AffiniPure Goat Anti-Rabbit IgG(H+L).