

For Research Use Only

ARL13B Polyclonal antibody

Catalog Number: 30332-1-AP



Basic Information

Catalog Number:

30332-1-AP

Size:

150ul , Concentration: 750 ug/ml by Nanodrop;

Source:

Guinea Pig

Isotype:

IgG

Immunogen Catalog Number:

AG12015

GenBank Accession Number:

BC094725

GeneID (NCBI):

200894

UNIPROT ID:

Q3SXY8

Full Name:

ADP-ribosylation factor-like 13B

Calculated MW:

48 kDa

Observed MW:

48-55 kDa

Purification Method:

Antigen affinity purification

Recommended Dilutions:

WB 1:5000-1:50000

IP 0.5-4.0 ug for 1.0-3.0 mg of total protein lysate

IF/ICC 1:50-1:500

Applications

Tested Applications:

WB, IF/ICC, IP, ELISA

Species Specificity:

human

Positive Controls:

WB : HEK-293 cells, HeLa cells, HepG2 cells, K-562 cells, L02 cells

IP : L02 cells,

IF/ICC : MDCK cells,

Background Information

ARL13B, also named as ARL2L1, is a small ciliary G protein of the Ras superfamily. Localized in the cilia, it is required for cilium biogenesis and sonic hedgehog signaling. Defects in ARL13B are the cause of Joubert syndrome (JS) which is an autosomal recessive disorder characterized by a distinctive cerebellar malformation (PMID: 19906870). This antibody detects two specific bands at 60 kDa and 48 kDa. ARL13b is predicted to be a 48 kDa protein, and the 60 kDa band is likely to represent a modified form of ARL13b. ARL13B can be used to mark the cilia (PMID: 22072986). The second antibody is used against guinea pigs.

Storage

Storage:

Store at -20°C. Stable for one year after shipment.

Storage Buffer:

PBS with 0.02% sodium azide and 50% glycerol pH 7.3.

Aliquoting is unnecessary for -20°C storage

*** 20ul sizes contain 0.1% BSA

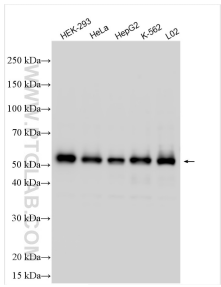
For technical support and original validation data for this product please contact:

T: 1 (888) 4PTGLAB (1-888-478-4522) (toll free in USA), or 1(312) 455-8498 (outside USA)

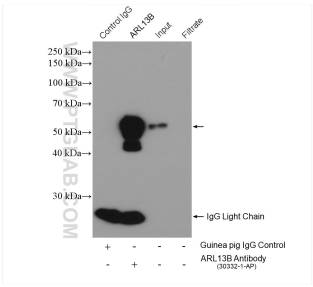
E: proteintech@ptglab.com
W: ptglab.com

This product is exclusively available under Proteintech Group brand and is not available to purchase from any other manufacturer.

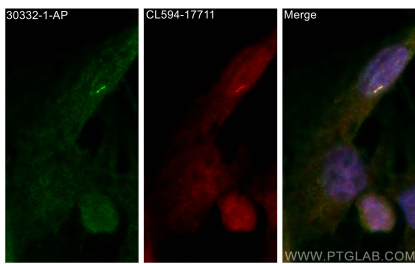
Selected Validation Data



Various lysates were subjected to SDS PAGE followed by western blot with 30332-1-AP (ARL13B antibody) at dilution of 1:10000 incubated at room temperature for 1.5 hours. The second antibody is used against guinea pigs.



IP result of anti-ARL13B (IP:30332-1-AP, 4ug; Detection:30332-1-AP 1:4000) with L02 cells lysate 3080 ug.



Immunofluorescent analysis of (4% PFA) fixed MDCK cells using ARL13B antibody (30332-1-AP) at dilution of 1:200 and CoraLite®488-Conjugated AffiniPure Goat Anti-Rabbit IgG(H+L), CoraLite®594 ARL13B antibody (CL594-17711, red).