

For Research Use Only

# ATPAF2 Polyclonal antibody

Catalog Number: 30334-1-AP



## Basic Information

<b>Catalog Number:</b> 30334-1-AP	<b>GenBank Accession Number:</b> BC032126	<b>Purification Method:</b> Antigen affinity purification
<b>Size:</b> 150ul , Concentration: 750 ug/ml by Nanodrop;	<b>GeneID (NCBI):</b> 91647	<b>Recommended Dilutions:</b> WB 1:500-1:3000 IHC 1:50-1:500
<b>Source:</b> Rabbit	<b>UNIPROT ID:</b> Q8N5M1	
<b>Isotype:</b> IgG	<b>Full Name:</b> ATP synthase mitochondrial F1 complex assembly factor 2	
<b>Immunogen Catalog Number:</b> AG33299	<b>Calculated MW:</b> 289 aa, 33 kDa	
	<b>Observed MW:</b> ~30 kDa	

## Applications

<b>Tested Applications:</b> WB, IHC, ELISA	<b>Positive Controls:</b>
<b>Species Specificity:</b> human, mouse	<b>WB :</b> mouse liver tissue,
<b>Note-IHC:</b> suggested antigen retrieval with <b>TE buffer pH 9.0; (*) Alternatively, antigen retrieval may be performed with citrate buffer pH 6.0</b>	<b>IHC :</b> human stomach cancer tissue,

## Background Information

ATP synthase mitochondrial F1 complex assembly factor 2 (ATPAF2) also name as ATP12 and ATP12p, is an essential house keeping protein. ATPAF2 is an assembly factor for the F1 component of mitochondrial ATP synthase. This protein binds specifically to the F1 alpha subunit and is thought to prevent this subunit from forming nonproductive homooligomers during enzyme assembly. The calculated MW is 33 kDa, 30334-1-AP can detect bands around 30 kDa and 50 kDa, the larger band may correspond to dimer or complex form. (PMID: 1826907, 11410595)

## Storage

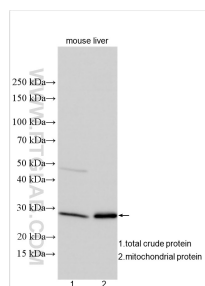
**Storage:**  
Store at -20°C. Stable for one year after shipment.  
**Storage Buffer:**  
PBS with 0.02% sodium azide and 50% glycerol pH 7.3.  
**Aliquoting is unnecessary for -20°C storage**

\*\*\* 20ul sizes contain 0.1% BSA

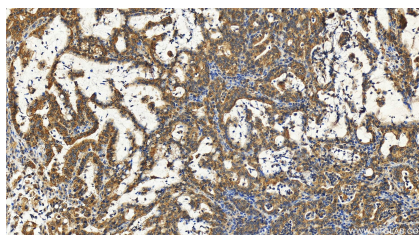
For technical support and original validation data for this product please contact:  
T: 1 (888) 4PTGLAB (1-888-478-4522) (toll free in USA), or 1(312) 455-8498 (outside USA)  
E: proteintech@ptglab.com  
W: ptglab.com

This product is exclusively available under Proteintech Group brand and is not available to purchase from any other manufacturer.

## Selected Validation Data



Mouse liver tissues (total crude protein, mitochondrial protein) were subjected to SDS PAGE followed by western blot with 30334-1-AP (ATPAF2 antibody) at dilution of 1:1500 incubated at room temperature for 1.5 hours.



Immunohistochemical analysis of paraffin-embedded human stomach cancer tissue slide using 30334-1-AP (ATPAF2 antibody) at dilution of 1:200 (under 20x lens). Heat mediated antigen retrieval with Tris-EDTA buffer (pH 9.0).