

For Research Use Only

# PRSS21 Polyclonal antibody

Catalog Number: 32522-1-AP



## Basic Information

Catalog Number:

32522-1-AP

Size:

150ul , Concentration: 400 ug/ml by Nanodrop;

Source:

Rabbit

Isotype:

IgG

Immunogen Catalog Number:

AG38156

GenBank Accession Number:

BC074999

GeneID (NCBI):

10942

UNIPROT ID:

Q9Y6M0

Full Name:

protease, serine, 21 (testisin)

Calculated MW:

314 aa, 35 kDa

Purification Method:

Antigen affinity purification

Recommended Dilutions:

FC (Intra): 0.25 ug per 10<sup>6</sup> cells in a 100 µl suspension

## Applications

Tested Applications:

FC (Intra), ELISA

Species Specificity:

human

Positive Controls:

FC (Intra) : A431 cells,

## Background Information

PRSS21 (Serine Protease 21), a trypsin family member, may be active on peptide linkages involving the carboxyl group of lysine or arginine. In terms of disease association, PRSS21 is implicated in various cancers, such as gastric cancer, testicular cancer, and ovarian cancer.

## Storage

Storage:

Store at -20°C. Stable for one year after shipment.

Storage Buffer:

PBS with 0.02% sodium azide and 50% glycerol, pH7.3

Aliquoting is unnecessary for -20°C storage

\*\*\* 20ul sizes contain 0.1% BSA

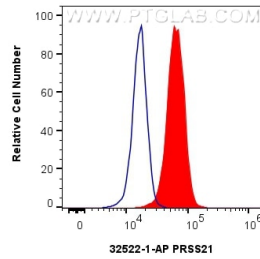
For technical support and original validation data for this product please contact:

T: 1 (888) 4PTGLAB (1-888-478-4522) (toll free in USA), or 1(312) 455-8498 (outside USA)

E: [proteintech@ptglab.com](mailto:proteintech@ptglab.com)  
W: [ptglab.com](http://ptglab.com)

This product is exclusively available under Proteintech Group brand and is not available to purchase from any other manufacturer.

## Selected Validation Data



$1 \times 10^6$  A431 cells were intracellularly stained with 0.25 ug Prss21 Polyclonal Antibody (32522-1-AP) and Coralite®488-Conjugated Goat Anti-Rabbit IgG(H+L) (SA00013-2)(red), or 0.25 ug Rabbit IgG control Rabbit PolyAb (30000-0-AP) (blue). Cells were fixed with 4% PFA and permeabilized with Flow Cytometry Perm Buffer (PF00011-C).