

For Research Use Only

Siglec-12 Polyclonal antibody

Catalog Number: 32534-1-AP



Basic Information

Catalog Number: 32534-1-AP	GenBank Accession Number: NM_031181.2	Purification Method: Antigen affinity Purification
Size: 150ul , Concentration: 550 ug/ml by Nanodrop;	GeneID (NCBI): 83382	Recommended Dilutions: WB 1:500-1:2000 IHC 1:50-1:500
Source: Rabbit	UNIPROT ID: Q91Y57	
Isotype: IgG	Full Name: sialic acid binding Ig-like lectin E	
Immunogen Catalog Number: EG2733	Calculated MW: 52 kDa	
	Observed MW: 70 kDa	

Applications

Tested Applications: WB, IHC, ELISA	Positive Controls:
Species Specificity: mouse, rat	WB : mouse spleen tissue, rat spleen tissue
Note-IHC: suggested antigen retrieval with TE buffer pH 9.0; (*) Alternatively, antigen retrieval may be performed with citrate buffer pH 6.0	IHC : mouse spleen tissue,

Background Information

Sialic acid-binding immunoglobulin-like lectins (SIGLECs) are a family of cell surface proteins belonging to the immunoglobulin superfamily that contain sialoside-binding N-terminal domains (PMID: 22749793). Sialic acid binding Ig-like lectin 12 (Siglec-12, also known as S2V, SLG, SIGLEC11, and Siglec-XII) is a member of the SIGLEC3-like subfamily of SIGLECs, which is highly expressed in the spleen, such as CD8+ cells, macrophages, neutrophils, and dendritic cells. It mediates sialic-acid-dependent binding to cells and could be an identification of therapeutic targets and prognostic biomarkers of sarcomas (PMID: 38182638).

Storage

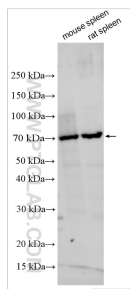
Storage:
Store at -20°C. Stable for one year after shipment.
Storage Buffer:
PBS with 0.02% sodium azide and 50% glycerol, pH7.3
Aliquoting is unnecessary for -20°C storage

*** 20ul sizes contain 0.1% BSA

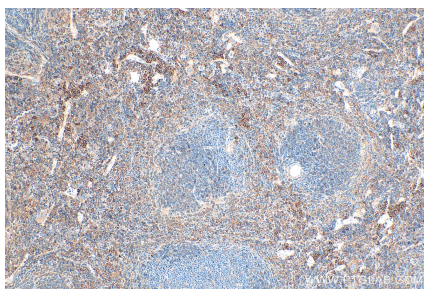
For technical support and original validation data for this product please contact:
T: 1 (888) 4PTGLAB (1-888-478-4522) (toll free in USA), or 1(312) 455-8498 (outside USA)
E: proteintech@ptglab.com
W: ptglab.com

This product is exclusively available under Proteintech Group brand and is not available to purchase from any other manufacturer.

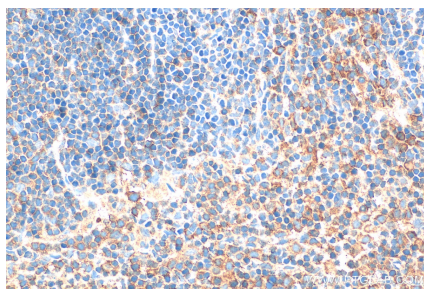
Selected Validation Data



Various lysates were subjected to SDS PAGE followed by western blot with 32534-1-AP (Siglec-12 antibody) at dilution of 1:1000 incubated at room temperature for 1.5 hours.



Immunohistochemical analysis of paraffin-embedded mouse spleen tissue slide using 32534-1-AP (Siglec-12 antibody) at dilution of 1:200 (under 10x lens). Heat mediated antigen retrieval with Tris-EDTA buffer (pH 9.0).



Immunohistochemical analysis of paraffin-embedded mouse spleen tissue slide using 32534-1-AP (Siglec-12 antibody) at dilution of 1:200 (under 40x lens). Heat mediated antigen retrieval with Tris-EDTA buffer (pH 9.0).