

For Research Use Only

ABCB6 Polyclonal ANTIBODY



Catalog Number: 51007-1-AP

2 Publications

Basic Information

Catalog Number:
51007-1-AP

Size:
30 µg/150 µl

Source:
Rabbit

Isotype:
IgG

Purification Method:
Antigen affinity purification

Immunogen Catalog Number:
AG0461

GenBank Accession Number:
BC000559

GeneID (NCBI):
10058

Full Name:
ATP-binding cassette, sub-family B
(MDR/TAP), member 6

Calculated MW:
94 kDa

Observed MW:
80-84 kDa

Recommended Dilutions:

WB 1:500-1:2000

IHC 1:20-1:200

IF 1:20-1:200

Applications

Tested Applications:

IF, IHC, WB, ELISA

Cited Applications:

IHC, WB

Species Specificity:

human

Cited Species:

human

**Note: suggested antigen retrieval with TE
buffer pH 9.0; (*) Alternatively, antigen
retrieval may be performed with citrate
buffer pH 6.0**

Positive Controls:

WB : Raji cells;

IHC : human breast cancer tissue;

IF : MCF-7 cells;

Background Information

Notable Publications

Author	Pubmed ID	Journal	Application
Zhang Caie C	23519333	J Invest Dermatol	WB,IHC
Takafumi Nakano	29856826	PLoS One	WB

Storage

Storage:

Store at -20°C. Stable for one year after shipment.

Storage Buffer:

PBS with 0.1% sodium azide and 50% glycerol pH 7.3.

Aliquoting is unnecessary for -20°C storage

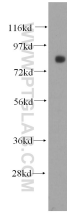
For technical support and original validation data for this product please contact:

T: 1 (888) 4PTGLAB (1-888-478-4522) (toll free in USA), or 1(312) 455-8498 (outside USA)

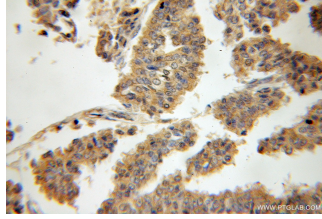
E: proteintech@ptglab.com
W: ptglab.com

This product is exclusively available under Proteintech Group brand and is not available to purchase from any other manufacturer.

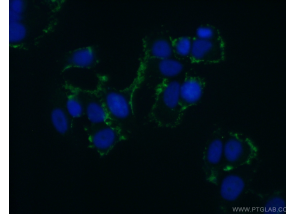
Selected Validation Data



Raji cells were subjected to SDS PAGE followed by western blot with 51007-1-AP(ABCB6 antibody) at dilution of 1:500 incubated at room temperature for 1.5 hours



Immunohistochemical of paraffin-embedded human breast cancer using 51007-1-AP(ABCB6 antibody) at dilution of 1:50 (under 10x lens)



Immunofluorescent analysis of MCF-7 cells using 51007-1-AP(ABCB6 antibody) at dilution of 1:50 and Alexa Fluor 488-conjugated AffiniPure Goat Anti-Rabbit IgG(H+L)