

For Research Use Only

GSK3B Polyclonal antibody

Catalog Number: 51065-1-AP

Featured Product

3 Publications



Basic Information

Catalog Number:

51065-1-AP

Size:

150UL, Concentration: 333 µg/ml by Bradford method using BSA as the standard;

Source:

Rabbit

Isotype:

IgG

GenBank Accession Number:

BC000251

GeneID (NCBI):

2932

Full Name:

glycogen synthase kinase 3 beta

Calculated MW:

433 aa, 48 kDa

Observed MW:

46-52 kDa

Purification Method:

Antigen affinity purification

Recommended Dilutions:

WB 1:500-1:2000

IP 0.5-4.0 µg for IP and 1:500-1:1000 for WB

IHC 1:20-1:200

IF 1:10-1:100

Applications

Tested Applications:

IF, IHC, IP, WB, ELISA

Cited Applications:

IF, WB

Species Specificity:

human, mouse

Cited Species:

human, mouse

Note-IHC: suggested antigen retrieval with TE buffer pH 9.0; (*) Alternatively, antigen retrieval may be performed with citrate buffer pH 6.0

Positive Controls:

WB: HeLa cells, HEK-293 cells, A549 cells

IP: HeLa cells,

IHC: human prostate cancer tissue,

IF: NIH/3T3 cells, HeLa cells

Background Information

Glycogen synthase kinase-3 (GSK3) is a proline-directed serine-threonine kinase that was initially identified as a phosphorylating and inactivating glycogen synthase. GSK3B is involved in energy metabolism, neuronal cell development, and body pattern formation. In skeletal muscle, it contributes to INS regulation of glycogen synthesis by phosphorylating and inhibiting GYS1 activity and hence glycogen synthesis. Researches showed that the crystal structure of human GSK3B, expressed in insect cells, at 2.8-angstrom resolution. This antibody recognizes the C-terminal of GSK3B.

Notable Publications

Author	Pubmed ID	Journal	Application
Dongdong Zhao	32908202	Cell Death Differ	WB
Rui Wang	29030155	J Steroid Biochem Mol Biol	WB
Alena Rudkouskaya	24371086	Mol Biol Cell	IF

Storage

Storage:

Store at -20°C.

Storage Buffer:

PBS with 0.02% sodium azide and 50% glycerol pH 7.3.

Aliquoting is unnecessary for -20°C storage

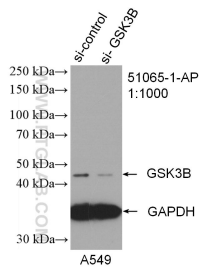
For technical support and original validation data for this product please contact:

T: 1 (888) 4PTGLAB (1-888-478-4522) (toll free in USA), or 1(312) 455-8498 (outside USA)

E: proteintech@ptglab.com
W: ptglab.com

This product is exclusively available under Proteintech Group brand and is not available to purchase from any other manufacturer.

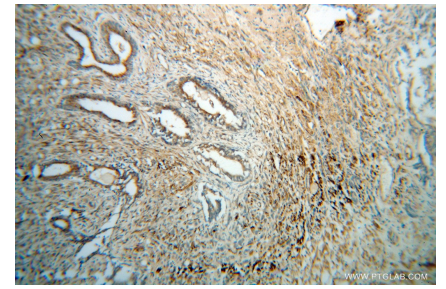
Selected Validation Data



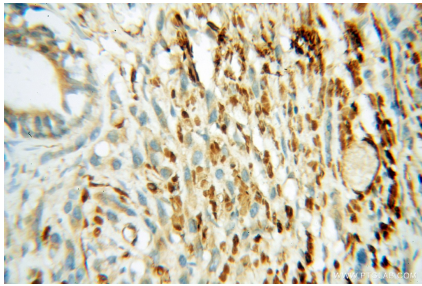
WB result of GSK3B antibody (51065-1-AP; 1:1000; incubated at room temperature for 1.5 hours) with sh-Control and sh-GSK3B transfected A549 cells.



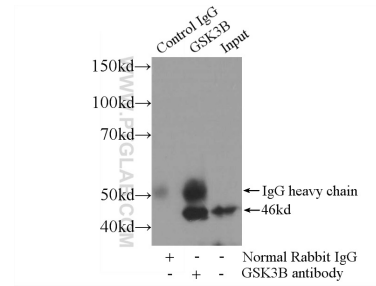
HeLa cells were subjected to SDS PAGE followed by western blot with 51065-1-AP (GSK3B antibody) at dilution of 1:1000 incubated at room temperature for 1.5 hours.



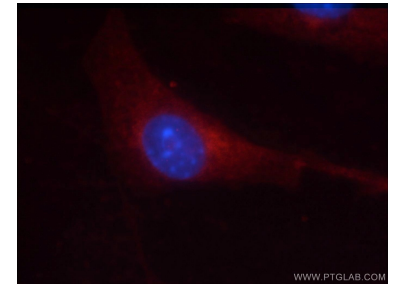
Immunohistochemical analysis of paraffin-embedded human prostate cancer using 51065-1-AP (GSK3B antibody) at dilution of 1:100 (under 10x lens).



Immunohistochemical analysis of paraffin-embedded human prostate cancer using 51065-1-AP (GSK3B antibody) at dilution of 1:100 (under 40x lens).



IP Result of anti-GSK3B (IP:51065-1-AP, 3ug; Detection:51065-1-AP 1:500) with HeLa cells lysate 920ug.



Immunofluorescent analysis of NIH/3T3 cells using 51065-1-AP (GSK3B antibody) at dilution of 1:25 and Rhodamine-Goat anti-Rabbit IgG.