

For Research Use Only

# MEK1-Specific Polyclonal ANTIBODY



Catalog Number: 51080-1-AP **2 Publications**

## Basic Information

<b>Catalog Number:</b> 51080-1-AP	<b>GenBank Accession Number:</b> BC139729	<b>Purification Method:</b> Antigen affinity purification
<b>Size:</b> 150UL, Concentration: 233 µg/ml by Bradford method using BSA as the standard;	<b>GeneID (NCBI):</b> 5604	<b>Recommended Dilutions:</b> IHC 1:20-1:200
<b>Source:</b> Rabbit	<b>Full Name:</b> mitogen-activated protein kinase kinase 1	
<b>Isotype:</b> IgG	<b>Calculated MW:</b> 43 kDa	

## Applications

<b>Tested Applications:</b> IHC, ELISA	<b>Positive Controls:</b> IHC : human endometrial cancer tissue, human colon tissue
<b>Cited Applications:</b> WB	
<b>Species Specificity:</b> human	
<b>Cited Species:</b> human	

**Note-IHC: suggested antigen retrieval with TE buffer pH 9.0; (\*) Alternatively, antigen retrieval may be performed with citrate buffer pH 6.0**

## Background Information

MEK1 is also named as MAP2K1 (mitogen-activated protein kinase kinase 1), MAPKK1, PRKMK1, MKK1 and belongs to the MAP kinase kinase subfamily. It is a dual-specificity kinase that mediate ERK1 and ERK2 activation during adhesion and growth factor signaling(PMID:19219045). It also plays an essential role in extra-embryonic ectoderm during placentogenesis. MEK1 has 2 isoforms produced by alternative splicing with the molecular weight of 43 kDa and 41 kDa. It can be phosphorylated(PMID:21144847). This antibody is specific to MEK1.

## Notable Publications

Author	Pubmed ID	Journal	Application
Pengchao Zheng	32021289	Onco Targets Ther	WB
Xu Jiang	27959964	PLoS One	WB

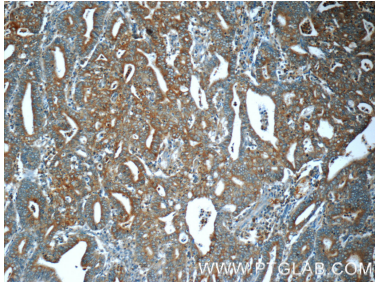
## Storage

**Storage:**  
Store at -20°C.  
**Storage Buffer:**  
PBS with 0.1% sodium azide and 50% glycerol pH 7.3.  
Aliquoting is unnecessary for -20°C storage

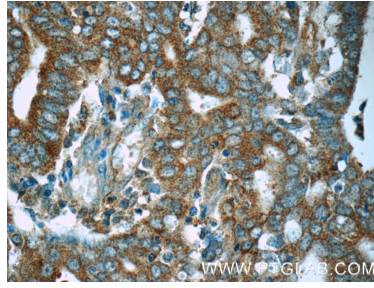
For technical support and original validation data for this product please contact:  
T: 1 (888) 4PTGLAB (1-888-478-4522) (toll free in USA), or 1(312) 455-8498 (outside USA)  
E: proteintech@ptglab.com  
W: ptglab.com

**This product is exclusively available under Proteintech Group brand and is not available to purchase from any other manufacturer.**

## Selected Validation Data



Immunohistochemical analysis of paraffin-embedded human endometrial cancer tissue slide using 51080-1-AP (MEK1-Specific antibody) at dilution of 1:50 (under 10x lens).



Immunohistochemical analysis of paraffin-embedded human endometrial cancer tissue slide using 51080-1-AP (MEK1-Specific antibody) at dilution of 1:50 (under 40x lens).