

LIN41 Polyclonal ANTIBODY

Catalog Number: 55003-1-AP

Basic Information

Catalog Number:
55003-1-AP

Size:
28 µg/150 µl

Source:
Rabbit

Isotype:
IgG

Purification Method:
Antigen affinity purification

Immunogen Catalog Number:

GenBank Accession Number:
NM_001039111

GeneID (NCBI):
131405

Full Name:
tripartite motif-containing 71

Calculated MW:
93 kDa

Observed MW:
93 kDa

Recommended Dilutions:

WB 1:500-1:1000

IHC 1:20-1:200

Applications

Tested Applications:
IHC, WB, ELISA

Species Specificity:
human, mouse, rat

Note: suggested antigen retrieval with *TE* buffer pH 9.0; (*) Alternatively, antigen retrieval may be performed with *citrate* buffer pH 6.0

Positive Controls:

WB : mouse kidney tissue; DU 145 cells, NIH/3T3 cells

IHC : human testis;

Background Information

TRIM71, also named as LIN41, belongs to the TRIMRBC family. It may be involved in controlling the timing of organ formation during development. The antibody is specific to TRIM71.

Notable Publications

| Author | Pubmed ID | Journal | Application |
|--------|-----------|---------|-------------|
|--------|-----------|---------|-------------|

Storage

Storage:

Store at -20°C. Stable for one year after shipment.

Storage Buffer:

0.1M NaHCO₃, 0.1M glycine, 0.02% sodium azide and 50% glycerol pH 7.3.

Aliquoting is unnecessary for -20°C storage

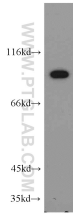
For technical support and original validation data for this product please contact:

T: 1 (888) 4PTGLAB (1-888-478-4522) (toll free in USA), or 1(312) 455-8498 (outside USA)

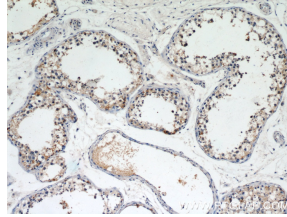
E: proteintech@ptglab.com
W: ptglab.com

This product is exclusively available under Proteintech Group brand and is not available to purchase from any other manufacturer.

Selected Validation Data



mouse kidney tissue were subjected to SDS PAGE followed by western blot with 55003-1-AP(LIN41 antibody) at dilution of 1:300 incubated at room temperature for 1.5 hours



Immunohistochemical of paraffin-embedded human testis using 55003-1-AP(LIN41 antibody) at dilution of 1:50 (under 10x lens)