

For Research Use Only

Cyclin B1 Polyclonal antibody

Catalog Number: 55004-1-AP **165 Publications**



Basic Information

Catalog Number:

55004-1-AP

Size:

150ul , Concentration: 347 µg/ml by Nanodrop and 347 µg/ml by Bradford method using BSA as the standard;

Source:

Rabbit

Isotype:

IgG

GenBank Accession Number:

NM_031966

GeneID (NCBI):

891

Full Name:

cyclin B1

Calculated MW:

48 kDa

Observed MW:

55-60 kDa

Purification Method:

Antigen affinity purification

Recommended Dilutions:

WB 1:1000-1:4000

IP 0.5-4.0 ug for IP and 1:500-1:1000 for WB

IF 1:50-1:500

Applications

Tested Applications:

FC, IF, IP, WB, ELISA

Cited Applications:

IF, WB

Species Specificity:

human, mouse

Cited Species:

bovine, human, mouse, rat, sheep

Positive Controls:

WB : HeLa cells, HepG2 cells, PC-3 cells, Jurkat cells, K-562 cells

IP : HeLa cells,

IF : HeLa cells,

Background Information

Cyclin B1 is a regulatory protein involved in mitosis. The gene product complexes with p34(cdc2) to form the maturation-promoting factor (MPF). Two alternative transcripts have been found, a constitutively expressed transcript and a cell cycle-regulated transcript, that is expressed predominantly during G2/M phase of the cell cycle. The different transcripts result from the use of alternate transcription initiation sites. The antibody is specific to CCNB1. We got a 55-60 kDa band in western blotting maybe due to phosphorylation.

Notable Publications

Author	Pubmed ID	Journal	Application
Zijian Zhang	34593753	Cell Death Dis	WB
Xiaoman Chen	30207732	Mol Pharm	WB
Hui-Ting Liu	34667869	Laryngoscope Investig Otolaryngol	WB

Storage

Storage:

Store at -20°C.

Storage Buffer:

PBS with 0.02% sodium azide and 50% glycerol pH 7.3.

Aliquoting is unnecessary for -20°C storage

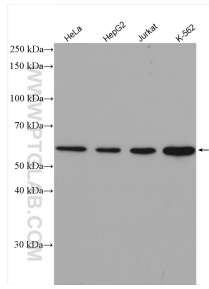
For technical support and original validation data for this product please contact:

T: 1 (888) 4PTGLAB (1-888-478-4522) (toll free in USA), or 1(312) 455-8498 (outside USA)

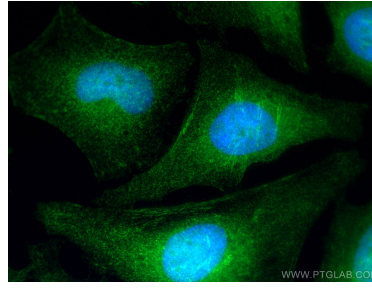
E: proteintech@ptglab.com
W: ptglab.com

This product is exclusively available under Proteintech Group brand and is not available to purchase from any other manufacturer.

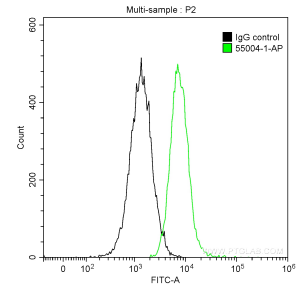
Selected Validation Data



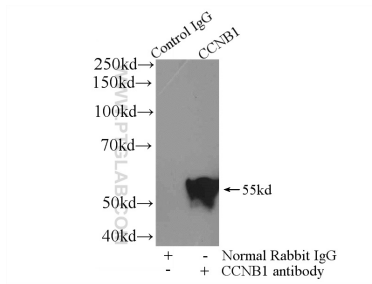
Various lysates were subjected to SDS PAGE followed by western blot with 55004-1-AP (Cyclin B1 antibody) at dilution of 1:2000 incubated at room temperature for 1.5 hours.



Immunofluorescent analysis of (4% PFA) fixed HeLa cells using Cyclin B1 antibody (55004-1-AP) at dilution of 1:200 and CoraLite®488-Conjugated AffiniPure Goat Anti-Rabbit IgG(H+L).



1×10^6 Jurkat cells were intracellularly stained with 0.2 ug Anti-Human Cyclin B1 (55004-1-AP) and CoraLite®488-Conjugated AffiniPure Goat Anti-Rabbit IgG(H+L) at dilution 1:1000 (green), and 0.2 ug Control Antibody. Cells were fixed with 90% MeOH.



IP Result of anti-Cyclin B1 (IP:55004-1-AP, 4ug; Detection:55004-1-AP 1:500) with HeLa cells lysate 1200ug.