

For Research Use Only

Annexin A1 Polyclonal ANTIBODY



Catalog Number: 55018-1-AP

5 Publications

Basic Information

Catalog Number:
55018-1-AP

Size:
39 µg/150 µl

Source:
Rabbit

Isotype:
IgG

Purification Method:
Antigen affinity purification

Immunogen Catalog Number:

GenBank Accession Number:
NM_000700

GeneID (NCBI):
301

Full Name:
annexin A1

Calculated MW:
40 kDa

Observed MW:
39 kDa

Recommended Dilutions:

WB 1:500-1:2000

IHC 1:20-1:200

Applications

Tested Applications:
FC, IHC, WB, ELISA

Cited Applications:
IF, IHC, WB

Species Specificity:
human, mouse, rat

Cited Species:
human, monkey, mouse

Note: suggested antigen retrieval with TE buffer pH 9.0; (*) Alternatively, antigen retrieval may be performed with citrate buffer pH 6.0

Positive Controls:

WB : C2C12 cell; HeLa cells, NIH/3T3 cells, HepG2 cells, C6 cells, K-562 cells

IHC : human oesophagus tissue; human colon tissue

Background Information

ANXA1, also named as ANX1, LPC1 and p35, belongs to the annexin family. It is a member of the annexin family of Ca²⁺-binding and phospholipid-binding proteins, and it is particularly abundant in various populations of peripheral blood leukocytes. ANXA1 regulates phospholipase A2 activity. It seems to bind from two to four calcium ions with high affinity. ANXA1 is a pleiotropic protein produced by many cell types including peripheral blood leukocytes. The antibody is specific to ANXA1.

Notable Publications

Author	Pubmed ID	Journal	Application
Peng Huang	27833268	Mediators Inflamm	WB,IF
Biaoxue Rong	25360220	Am J Transl Res	IHC
Rong Biaoxue	25300907	Expert Rev Mol Diagn	

Storage

Storage:

Store at -20°C. Stable for one year after shipment.

Storage Buffer:

PBS with 0.02% sodium azide and 50% glycerol pH 7.3.

Aliquoting is unnecessary for -20°C storage

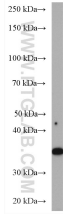
For technical support and original validation data for this product please contact:

T: 1 (888) 4PTGLAB (1-888-478-4522) (toll free in USA), or 1(312) 455-8498 (outside USA)

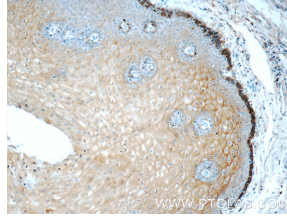
E: proteintech@ptglab.com
W: ptglab.com

This product is exclusively available under Proteintech Group brand and is not available to purchase from any other manufacturer.

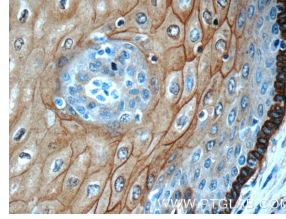
Selected Validation Data



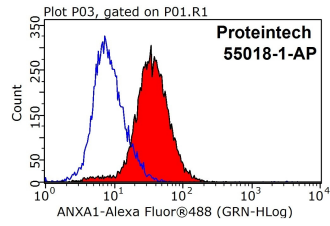
C2C12 cell were subjected to SDS PAGE followed by western blot with 55018-1-AP (Annexin A1 antibody) at dilution of 1:1000 incubated at room temperature for 1.5 hours



Immunohistochemistry of paraffin-embedded human oesophagus tissue slide using 55018-1-AP Annexin A1 antibody at dilution of 1:50 (under 10x lens)



Immunohistochemistry of paraffin-embedded human oesophagus tissue slide using 55018-1-AP Annexin A1 antibody at dilution of 1:50 (under 40x lens)



1X10⁶ HeLa cells were stained with 0.2ug Annexin A1 antibody (55018-1-AP, red) and control antibody (blue). Fixed with 90% MeOH blocked with 3% BSA (30 min). Alexa Fluor 488-conjugated AffiniPure Goat Anti-Rabbit IgG(H+L) with dilution 1:1000.