

For Research Use Only

# PFKM Polyclonal antibody

Catalog Number: 55028-1-AP

Featured Product

20 Publications



## Basic Information

**Catalog Number:**

55028-1-AP

**Size:**

150UL, Concentration: 527 µg/ml by Bradford method using BSA as the standard;

**Source:**

Rabbit

**Isotype:**

IgG

**GenBank Accession Number:**

NM\_000289

**GeneID (NCBI):**

5213

**Full Name:**

phosphofructokinase, muscle

**Calculated MW:**

85 kDa

**Observed MW:**

75-85 kDa

**Purification Method:**

Antigen affinity purification

**Recommended Dilutions:**

WB 1:500-1:3000

IP 0.5-4.0 µg for IP and 1:500-1:3000 for WB

IHC 1:20-1:200

IF 1:10-1:100

## Applications

**Tested Applications:**

IF, IHC, IP, WB, ELISA

**Cited Applications:**

IF, WB

**Species Specificity:**

human, mouse, rat

**Cited Species:**

human, mouse, rat, swine

**Note-IHC: suggested antigen retrieval with TE buffer pH 9.0; (\*) Alternatively, antigen retrieval may be performed with citrate buffer pH 6.0**

**Positive Controls:**

**WB:** human skeletal muscle tissue, HeLa cells, HepG2 cells, human brain tissue

**IP:** mouse skeletal muscle tissue, mouse liver tissue

**IHC:** human skeletal muscle tissue,

**IF:** HeLa cells,

## Background Information

PFKM, also named as GSD7, PFK-1, PFK-M and PFKX, belongs to the phosphofructokinase family and Two domains subfamily. PFKM catalyze the reaction: ATP + D-fructose 6-phosphate = ADP + D-fructose 1,6-bisphosphate. It is a key regulatory enzyme in glycolysis. Defects in PFKM are the cause of glycogen storage disease type 7 (GSD7). PFKM has three isoforms with molecular mass of 85, 82 and 93 kDa. The antibody is specific to PFKM.

## Notable Publications

Author	Pubmed ID	Journal	Application
Pengjuan Zhang	31714070	Anal Chem	WB
Kelei Dong	27207834	Biochem Biophys Res Commun	WB
Li Wu	29609009	J Ethnopharmacol	WB

## Storage

**Storage:**

Store at -20°C.

**Storage Buffer:**

0.1M NaHCO<sub>3</sub>, 0.1M glycine, 0.02% sodium azide and 50% glycerol pH 7.3.

Aliquoting is unnecessary for -20°C storage

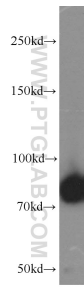
For technical support and original validation data for this product please contact:

T: 1 (888) 4PTGLAB (1-888-478-4522) (toll free in USA), or 1(312) 455-8498 (outside USA)

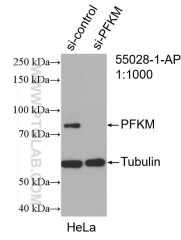
E: proteintech@ptglab.com  
W: ptglab.com

**This product is exclusively available under Proteintech Group brand and is not available to purchase from any other manufacturer.**

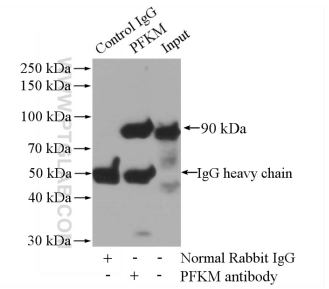
## Selected Validation Data



human skeletal muscle tissue were subjected to SDS PAGE followed by western blot with 55028-1-AP (PFKM antibody) at dilution of 1:800 incubated at room temperature for 1.5 hours.



WB result of PFKM antibody (55028-1-AP; 1:1000; incubated at room temperature for 1.5 hours) with sh-Control and sh-PFKM transfected HeLa cells.



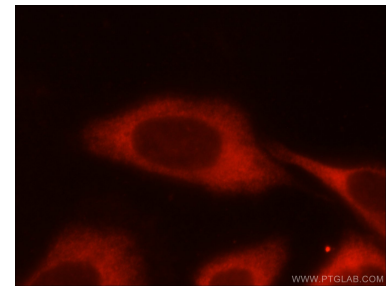
IP Result of anti-PFKM (IP:55028-1-AP, 4ug; Detection:55028-1-AP 1:1500) with mouse skeletal muscle tissue lysate 2200ug.



Immunohistochemical analysis of paraffin-embedded human skeletal muscle tissue slide using 55028-1-AP (PFKM Antibody) at dilution of 1:50 (under 10x lens).



Immunohistochemical analysis of paraffin-embedded human skeletal muscle tissue slide using 55028-1-AP (PFKM Antibody) at dilution of 1:50 (under 40x lens).



Immunofluorescent analysis of HeLa cells using 55028-1-AP (PFKM antibody) at dilution of 1:25 and Rhodamine-Goat anti-Rabbit IgG.