

For Research Use Only

DRD2 Polyclonal antibody

Catalog Number: 55084-1-AP

Featured Product

40 Publications



Basic Information

Catalog Number:

55084-1-AP

Size:

150ul, Concentration: 700 ug/ml by Nanodrop;

Source:

Rabbit

Isotype:

IgG

GenBank Accession Number:

NM_016574

GeneID (NCBI):

1813

UNIPROT ID:

P14416

Full Name:

dopamine receptor D2

Calculated MW:

51 kDa

Observed MW:

50-60 kDa

Purification Method:

Antigen affinity purification

Recommended Dilutions:

WB: 1:1000-1:8000

IP: 0.5-4.0 ug for 1.0-3.0 mg of total protein lysate

IF-P: 1:50-1:500

IF-Fro: 1:50-1:500

Applications

Tested Applications:

WB, IF-P, IF-Fro, IP, ELISA

Cited Applications:

WB, IHC, IF

Species Specificity:

human, mouse

Cited Species:

human, mouse, rat

Positive Controls:

WB: SH-SY5Y cells, mouse brain tissue

IP: SH-SY5Y cells,

IF-P: mouse brain tissue,

IF-Fro: mouse brain tissue,

Background Information

DRD2, also named D2DR and D2R, belongs to the G-protein coupled receptor 1 family. It is one of the five types (D1 to D5) of receptors for dopamine. The activity of DRD2 is mediated by G proteins which inhibit adenylyl cyclase. Defects in DRD2 are associated with dystonia type 11 (DYT11). The antibody is specific to DRD2.

Notable Publications

Author	Pubmed ID	Journal	Application
Subramaniam Jayanthi	36077488	Int J Mol Sci	
Qing Han	36288554	Endocrinology	
Youjun Yang	36279723	Biomed Pharmacother	IHC

Storage

Storage:

Store at -20°C. Stable for one year after shipment.

Storage Buffer:

PBS with 0.02% sodium azide and 50% glycerol, pH7.3

Aliquoting is unnecessary for -20°C storage

*** 20ul sizes contain 0.1% BSA

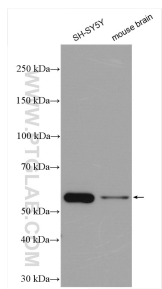
For technical support and original validation data for this product please contact:

T: 1 (888) 4PTGLAB (1-888-478-4522) (toll free in USA), or 1(312) 455-8498 (outside USA)

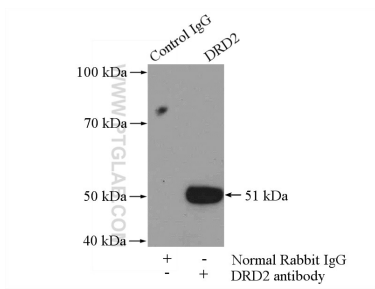
E: proteintech@ptglab.com
W: ptglab.com

This product is exclusively available under Proteintech Group brand and is not available to purchase from any other manufacturer.

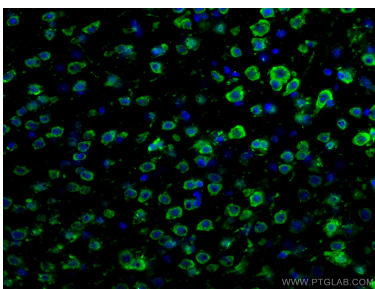
Selected Validation Data



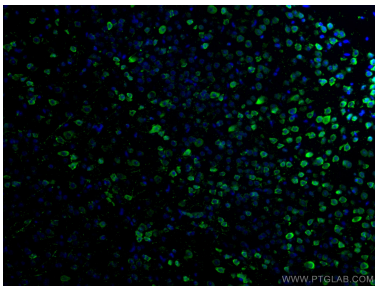
Various lysates were subjected to SDS PAGE followed by western blot with 55084-1-AP (DRD2 antibody) at dilution of 1:4000 incubated at room temperature for 1.5 hours.



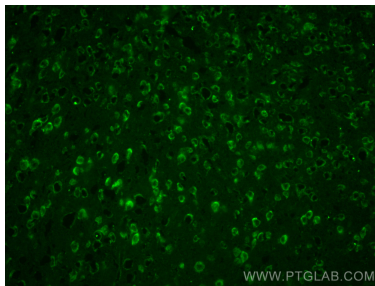
IP result of anti-DRD2 (IP:55084-1-AP, 4ug; Detection:55084-1-AP 1:300) with SH-SY5Y cells lysate 3000ug.



Immunofluorescent analysis of (4% PFA) fixed mouse brain tissue using DRD2 antibody (55084-1-AP) at dilution of 1:200 and CoraLite®488-Conjugated AffiniPure Goat Anti-Rabbit IgG(H+L).



Immunofluorescent analysis of (4% PFA) fixed mouse brain tissue using DRD2 antibody (55084-1-AP) at dilution of 1:200 and CoraLite®488-Conjugated AffiniPure Goat Anti-Rabbit IgG(H+L).



Immunofluorescent analysis of (4% PFA) fixed frozen OCT-embedded mouse brain tissue using 55084-1-AP (DRD2 antibody) at dilution of 1:200 and CoraLite®488-Conjugated AffiniPure Goat Anti-Rabbit IgG(H+L).