

For Research Use Only

DLG1 Polyclonal ANTIBODY



Catalog Number: 55085-1-AP **1 Publications**

Basic Information

Catalog Number: 55085-1-AP	GenBank Accession Number: NM_004087	Purification Method: Antigen affinity purification
Size: 150UL, Concentration: 267 µg/ml by Bradford method using BSA as the standard;	GeneID (NCBI): 1739	Recommended Dilutions: WB 1:200-1:1000
Source: Rabbit	Full Name: discs, large homolog 1 (Drosophila)	
Isotype: IgG	Calculated MW: 100 kDa	
	Observed MW: 120 kDa, 130-140 kDa	

Applications

Tested Applications: WB, ELISA	Positive Controls: WB: mouse lung tissue, HeLa cells
Cited Applications: IF	
Species Specificity: human, mouse, rat	
Cited Species: human, mouse	

Background Information

DLG1, also named as SAP97, hDlg and DLGH1, belongs to the MAGUK family. It is essential multidomain scaffolding protein required for normal development. DLG1 may play a role in adherens junction assembly, signal transduction, cell proliferation, synaptogenesis and lymphocyte activation. It regulates the excitability of cardiac myocytes by modulating the functional expression of Kv4 channels. DLG1 is a functional regulator of Kv1.5 channel. The DLG1-MPP7 complex promotes epithelial cell polarity and tight junction formation. The antibody is specific to DLG1.

Notable Publications

Author	Pubmed ID	Journal	Application
Rik Westland	26352300	Kidney Int	IF

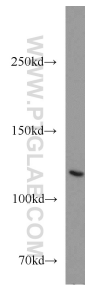
Storage

Storage:
Store at -20°C.
Storage Buffer:
0.1M NaHCO₃, 0.1M glycine, 0.02% sodium azide and 50% glycerol pH 7.3.
Aliquoting is unnecessary for -20°C storage

For technical support and original validation data for this product please contact:
T: 1 (888) 4PTGLAB (1-888-478-4522) (toll free in USA), or 1(312) 455-8498 (outside USA)
E: proteintech@ptglab.com
W: ptglab.com

This product is exclusively available under Proteintech Group brand and is not available to purchase from any other manufacturer.

Selected Validation Data



mouse lung tissue were subjected to SDS PAGE followed by western blot with 55085-1-AP (DLG1 antibody) at dilution of 1:300 incubated at room temperature for 1.5 hours.