

For Research Use Only

# WEE2 Polyclonal antibody

Catalog Number: 55119-1-AP



## Basic Information

<b>Catalog Number:</b> 55119-1-AP	<b>GenBank Accession Number:</b> NM_001105558	<b>Purification Method:</b> Antigen affinity purification
<b>Size:</b> 150ul , Concentration: 400 µg/ml by Nanodrop and 473 µg/ml by Bradford method using BSA as the standard;	<b>GeneID (NCBI):</b> 494551	<b>Recommended Dilutions:</b> WB 1:500-1:1000
<b>Source:</b> Rabbit	<b>Full Name:</b> WEE1 homolog 2 (S. pombe)	
<b>Isotype:</b> IgG	<b>Calculated MW:</b> 63 kDa	
	<b>Observed MW:</b> 63-66 kDa	

## Applications

<b>Tested Applications:</b> WB,ELISA	<b>Positive Controls:</b> WB : Jurkat cells, human ovary tissue
<b>Species Specificity:</b> human	

## Background Information

WEE2, also named as WEE1B, belongs to the protein kinase superfamily. Ser/Thr protein kinase family and WEE1 subfamily. It phosphorylates and inhibits CDK1. WEE2 may act as a negative regulator of entry into mitosis (G2 to M transition). WEE2 is conserved from yeast to humans. The aim of the present study was to determine the spatiotemporal expression pattern and the function of WEE2 during oocyte maturation in a nonhuman primate species, the rhesus macaque. Taking the long double-stranded RNA-mediated RNA interference approach, down-regulation of WEE2 led to meiotic resumption in a subset of GV oocytes even in the presence of a phosphodiesterase 3 inhibitor. Overexpression of WEE2 delays the reentry of oocytes into meiosis in both mice and monkeys. WEE2 is a conserved oocyte-specific meiosis inhibitor that functions downstream of cAMP in nonhuman primates.(PMID: 20200212) The antibody is specific to WEE2.

## Storage

**Storage:**  
Store at -20°C.  
**Storage Buffer:**  
0.1M NaHCO<sub>3</sub>, 0.1M glycine, 0.02% sodium azide and 50% glycerol pH 7.3.  
Aliquoting is unnecessary for -20°C storage

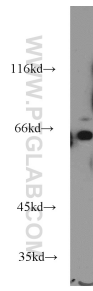
For technical support and original validation data for this product please contact:

T: 1 (888) 4PTGLAB (1-888-478-4522) (toll free in USA), or 1(312) 455-8498 (outside USA)

E: [proteintech@ptglab.com](mailto:proteintech@ptglab.com)  
W: [ptglab.com](http://ptglab.com)

This product is exclusively available under Proteintech Group brand and is not available to purchase from any other manufacturer.

## Selected Validation Data



Jurkat cells were subjected to SDS PAGE followed by western blot with 55119-1-AP (WEE2 antibody) at dilution of 1:500 incubated at room temperature for 1.5 hours.