

smooth muscle actin-specific Polyclonal ANTIBODY

Catalog Number: 55135-1-AP

58 Publications

Basic Information

Catalog Number:
55135-1-AP

Size:
53 µg/150 µl

Source:
Rabbit

Isotype:
IgG

Purification Method:
Antigen affinity purification

Immunogen Catalog Number:

GenBank Accession Number:
NM_001613

GeneID (NCBI):
59

Full Name:
actin, alpha 2, smooth muscle, aorta

Calculated MW:
42 kDa

Observed MW:
42 kDa

Recommended Dilutions:

WB 1:500-1:4000

IHC 1:20-1:200

IF 1:50-1:500

Applications

Tested Applications:

IF, IHC, WB, ELISA

Cited Applications:

IF, IHC, WB

Species Specificity:

human, mouse, rat

Cited Species:

human, mouse, rabbit, rat

Note: suggested antigen retrieval with TE buffer pH 9.0; (*) Alternatively, antigen retrieval may be performed with citrate buffer pH 6.0

Positive Controls:

WB : mouse colon tissue; mouse stomach tissue, mouse kidney tissue

IHC : human heart tissue; mouse colon tissue, mouse liver tissue, human hepatocirrhosis tissue, human colon tissue, rat colon tissue, human colon cancer tissue

IF : mouse heart tissue;

Background Information

ACTA2, also named as a-SMA, AAT6, ACTSA belongs to the actin family. Actins are highly conserved proteins that are involved in various types of cell motility and are ubiquitously expressed in all eukaryotic cells. Defects in ACTA2 are the cause of aortic aneurysm familial thoracic type 6 (AAT6). The immunogen of this antibody is a specific domain of ACTA2. This antibody stains the aorta only.

Notable Publications

Author	Pubmed ID	Journal	Application
Jun-Kun Zhan	30542441	Exp Ther Med	
Yannan Liu	30207362	Food Funct	WB, IHC
Linglu Zhao	30196308	Med Sci Monit	IF

Storage

Storage:

Store at -20°C. Stable for one year after shipment.

Storage Buffer:

PBS with 0.1% sodium azide and 50% glycerol pH 7.3.

Aliquoting is unnecessary for -20°C storage

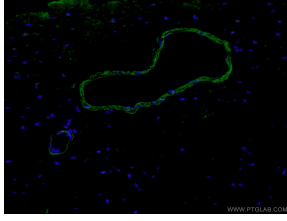
For technical support and original validation data for this product please contact:

T: 1 (888) 4PTGLAB (1-888-478-4522) (toll free in USA), or 1(312) 455-8498 (outside USA)

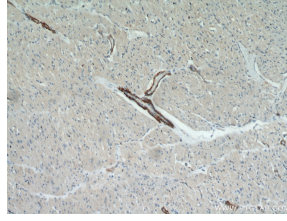
E: proteintech@ptglab.com
W: ptglab.com

This product is exclusively available under Proteintech Group brand and is not available to purchase from any other manufacturer.

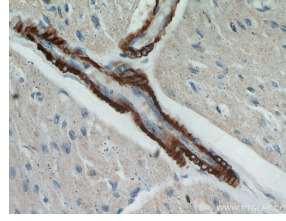
Selected Validation Data



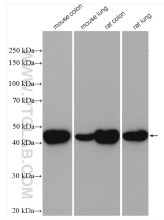
Immunofluorescent analysis of (4% PFA) fixed mouse heart tissue using 55135-1-AP (Alpha SMA-specific antibody) at dilution of 1:200 and Alexa Fluor 488-Conjugated AffiniPure Goat Anti-Rabbit IgG(H+L)



Immunohistochemical analysis of paraffin-embedded human heart using 55135-1-AP(ACTA2-Specific antibody) at dilution of 1:100 (under 10x lens)



Immunohistochemical analysis of paraffin-embedded human heart using 55135-1-AP(ACTA2-Specific antibody) at dilution of 1:100 (under 40x lens)



Various lysates were subjected to SDS PAGE followed by western blot with 55135-1-AP (smooth muscle actin-specific antibody) at dilution of 1:2000 incubated at room temperature for 1.5 hours