

For Research Use Only

PPP3CA-specific Polyclonal antibody



Catalog Number: 55147-1-AP

Basic Information

Catalog Number:

55147-1-AP

Size:

150ul , Concentration: 300 µg/ml by Nanodrop and 220 µg/ml by Bradford method using BSA as the standard;

Source:

Rabbit

Isotype:

IgG

GenBank Accession Number:

NM_000944

GeneID (NCBI):

5530

Full Name:

protein phosphatase 3 (formerly 2B), catalytic subunit, alpha isoform

Calculated MW:

59 kDa

Observed MW:

59 kDa

Purification Method:

Antigen affinity purification

Recommended Dilutions:

WB 1:500-1:1000

Applications

Tested Applications:

WB,ELISA

Species Specificity:

human, mouse

Positive Controls:

WB : mouse brain tissue, mouse pancreas tissue

Background Information

PPP3CA, also called calcineurin A α , is the only serine/threonine protein phosphatase under the control of Ca $^{2+}$ /calmodulin, and plays a critical role in the coupling of Ca $^{2+}$ signals to cellular responses. Ca $^{2+}$ signaling plays a central role in hypertrophic growth of cardiac and skeletal muscle in response to mechanical load and a variety of signals. Therefore, PPP3CA plays an important role in muscle differentiation, especially in muscle fiber type conversion. It is also involved in osteoclast regulation, regulating bone formation through an effect on osteoblast differentiation. This antibody is specific to PPP3CA.

Storage

Storage:

Store at -20°C.

Storage Buffer:

PBS with 0.02% sodium azide and 50% glycerol pH 7.3.

Aliquoting is unnecessary for -20°C storage

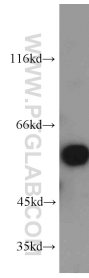
For technical support and original validation data for this product please contact:

T: 1 (888) 4PTGLAB (1-888-478-4522) (toll free in USA), or 1(312) 455-8498 (outside USA)

E: proteintech@ptglab.com
W: ptglab.com

This product is exclusively available under Proteintech Group brand and is not available to purchase from any other manufacturer.

Selected Validation Data



mouse brain tissue were subjected to SDS PAGE followed by western blot with 55147-1-AP (PPP3CA-specific antibody) at dilution of 1:300 incubated at room temperature for 1.5 hours.