

For Research Use Only

PPP1CC Polyclonal antibody

Catalog Number: 55150-1-AP

3 Publications



Basic Information

Catalog Number:

55150-1-AP

Size:

150ul, Concentration: 920 ug/ml by Nanodrop and 920 ug/ml by Bradford method using BSA as the standard;

Source:

Rabbit

Isotype:

IgG

GenBank Accession Number:

NM_002710

GeneID (NCBI):

5501

UNIPROT ID:

P36873

Full Name:

protein phosphatase 1, catalytic subunit, gamma isoform

Calculated MW:

38 kDa

Observed MW:

35 kDa

Purification Method:

Antigen affinity purification

Recommended Dilutions:

WB 1:500-1:1000

IP 0.5-4.0 ug for 1.0-3.0 mg of total protein lysate

IHC 1:20-1:200

IF/ICC 1:50-1:500

Applications

Tested Applications:

WB, IHC, IF/ICC, IP, ELISA

Cited Applications:

WB

Species Specificity:

human, mouse, rat

Cited Species:

human, mouse

Note-IHC: suggested antigen retrieval with TE buffer pH 9.0; (*) Alternatively, antigen retrieval may be performed with citrate buffer pH 6.0

Positive Controls:

WB : mouse brain tissue, L02 cells, rat brain tissue

IP : mouse brain tissue,

IHC : human heart tissue, human liver tissue

IF/ICC : HeLa cells,

Background Information

PPP1CC, also named as PP-1G, belongs to the PPP phosphatase family and PP-1 subfamily. Protein phosphatase 1 (PP1) is essential for cell division, and participates in the regulation of glycogen metabolism, muscle contractility and protein synthesis. It is involved in regulation of ionic conductances and long-term synaptic plasticity. PPP1CC may play an important role in dephosphorylating substrates such as the postsynaptic density-associated Ca²⁺/calmodulin dependent protein kinase II. The antibody is specific to PPP1CC.

Notable Publications

Author	Pubmed ID	Journal	Application
Vinita Yadav	28637872	J Biol Chem	WB
Yin Zhang	34907157	Cell Death Dis	WB
Ye-Ya Tan	34124052	Front Cell Dev Biol	WB

Storage

Storage:

Store at -20°C. Stable for one year after shipment.

Storage Buffer:

PBS with 0.02% sodium azide and 50% glycerol pH 7.3.

Aliquoting is unnecessary for -20°C storage

*** 20ul sizes contain 0.1% BSA

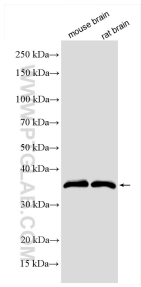
For technical support and original validation data for this product please contact:

T: 1 (888) 4PTGLAB (1-888-478-4522) (toll free in USA), or 1(312) 455-8498 (outside USA)

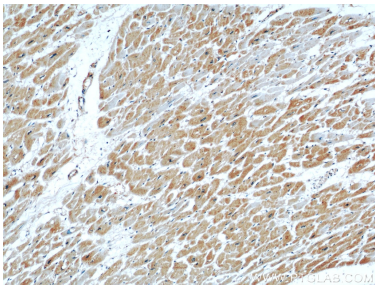
E: proteintech@ptglab.com
W: ptglab.com

This product is exclusively available under Proteintech Group brand and is not available to purchase from any other manufacturer.

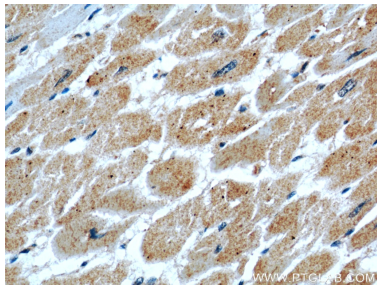
Selected Validation Data



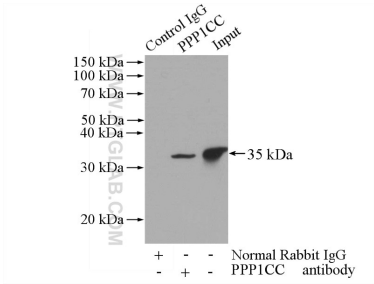
Various lysates were subjected to SDS PAGE followed by western blot with 55150-1-AP (PPP1CC antibody) at dilution of 1:600 incubated at room temperature for 1.5 hours.



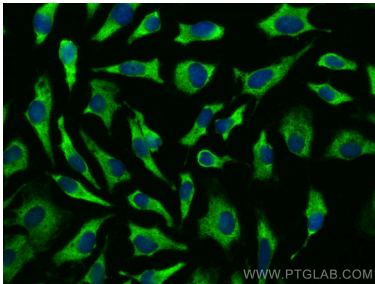
Immunohistochemical analysis of paraffin-embedded human heart using 55150-1-AP (PPP1CC antibody) at dilution of 1:50 (under 10x lens).



Immunohistochemical analysis of paraffin-embedded human heart using 55150-1-AP (PPP1CC antibody) at dilution of 1:50 (under 40x lens).



IP result of anti-PPP1CC (IP:55150-1-AP, 4ug; Detection:55150-1-AP 1:500) with mouse brain tissue lysate 3440ug.



Immunofluorescent analysis of (-20°C Ethanol) fixed HeLa cells using PPP1CC antibody (55150-1-AP) at dilution of 1:200 and CoraLite®488-Conjugated AffiniPure Goat Anti-Rabbit IgG(H+L) (SA00013-2).