

For Research Use Only

# ATP1A2-Specific Polyclonal ANTIBODY



Catalog Number: 55179-1-AP

## Basic Information

Catalog Number:  
55179-1-AP

Size:  
20 µg/150 µl

Source:  
Rabbit

Isotype:  
IgG

Purification Method:  
Antigen affinity purification

Immunogen Catalog Number:

GenBank Accession Number:  
NM\_000702

GeneID (NCBI):  
477

Full Name:  
ATPase, Na<sup>+</sup>/K<sup>+</sup> transporting, alpha 2 (+)  
polypeptide

Calculated MW:  
112 kDa

Observed MW:  
100 kDa

Recommended Dilutions:

WB 1:500-1:1000

IP 0.5-4.0 µg for IP and 1:500-1:1000 for WB

IHC 1:20-1:200

## Applications

Tested Applications:  
IHC, IP, WB, ELISA

Species Specificity:  
human, mouse

**Note: suggested antigen retrieval with TE buffer pH 9.0; (\*) Alternatively, antigen retrieval may be performed with citrate buffer pH 6.0**

Positive Controls:

WB : mouse brain tissue; human brain tissue

IP : mouse brain tissue;

IHC : human skeletal muscle tissue; mouse heart tissue

## Background Information

ATP1A2, also named as KIAA0778, belongs to the cation transport ATPase (P-type) family and Type IIC subfamily. It is the catalytic component of the active enzyme, which catalyzes the hydrolysis of ATP coupled with the exchange of sodium and potassium ions across the plasma membrane. Defects in ATP1A2 are the cause of familial hemiplegic migraine type 2 (FHM2). Defects in ATP1A2 are a cause of alternating hemiplegia of childhood (AHC). This antibody is specific to ATP1A2.

## Notable Publications

Author	Pubmed ID	Journal	Application
--------	-----------	---------	-------------

## Storage

Storage:

Store at -20°C. Stable for one year after shipment.

Storage Buffer:

PBS with 0.02% sodium azide and 50% glycerol pH 7.3.

Aliquoting is unnecessary for -20°C storage

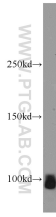
For technical support and original validation data for this product please contact:

T: 1 (888) 4PTGLAB (1-888-478-4522) (toll free in USA), or 1(312) 455-8498 (outside USA)

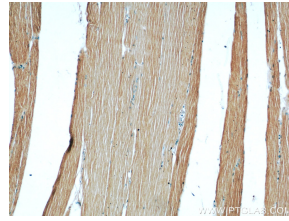
E: [proteintech@ptglab.com](mailto:proteintech@ptglab.com)  
W: [ptglab.com](http://ptglab.com)

This product is exclusively available under Proteintech Group brand and is not available to purchase from any other manufacturer.

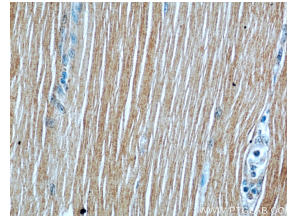
Selected Validation Data



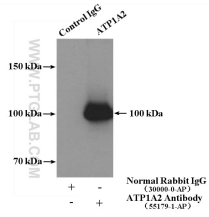
mouse brain tissue were subjected to SDS PAGE followed by western blot with 55179-1-AP(ATP1A2-Specific antibody) at dilution of 1:800 incubated at room temperature for 1.5 hours



Immunohistochemical of paraffin-embedded human skeletal muscle using 55179-1-AP(ATP1A2-Specific antibody) at dilution of 1:50 (under 10x lens)



Immunohistochemical of paraffin-embedded human skeletal muscle using 55179-1-AP(ATP1A2-Specific antibody) at dilution of 1:50 (under 40x lens)



IP Result of anti-ATP1A2-Specific (IP:55179-1-AP, 4ug; Detection:55179-1-AP 1:800) with mouse brain tissue lysate 4000ug.