

For Research Use Only

# GPR35 Polyclonal antibody

Catalog Number: 55248-1-AP

Featured Product

3 Publications



## Basic Information

**Catalog Number:**

55248-1-AP

**Size:**

150ul, Concentration: 500 µg/ml by Nanodrop and 300 µg/ml by Bradford method using BSA as the standard;

**Source:**

Rabbit

**Isotype:**

IgG

**GenBank Accession Number:**

NM\_005301

**GeneID (NCBI):**

2859

**UNIPROT ID:**

Q9HC97

**Full Name:**

G protein-coupled receptor 35

**Calculated MW:**

34 kDa

**Observed MW:**

34 kDa

**Purification Method:**

Antigen affinity purification

**Recommended Dilutions:**

WB 1:500-1:2000

## Applications

**Tested Applications:**

WB, ELISA

**Cited Applications:**

WB

**Species Specificity:**

human

**Cited Species:**

human

**Positive Controls:**

WB : A549 cells, human brain tissue, human stomach tissue

## Background Information

GPR35, also named as KYNA receptor, belongs to the G-protein coupled receptor 1 family. GPR35 acts as a receptor for kynurenic acid, an intermediate in the tryptophan metabolic pathway. The activity of GPR35 is mediated by G-proteins that elicit calcium mobilization and inositol phosphate production through G(qi/o) proteins (PMID:16754668). This antibody is specific to GPR35.

## Notable Publications

Author	Pubmed ID	Journal	Application
Di Wang	33777681	Acta Pharm Sin B	WB
Wuxiyar Otkur	37054942	Eur J Pharmacol	WB
Gregory A Wyant	35926043	Science	WB

## Storage

**Storage:**

Store at -20°C. Stable for one year after shipment.

**Storage Buffer:**

PBS with 0.02% sodium azide and 50% glycerol pH 7.3.

Aliquoting is unnecessary for -20°C storage

\*\*\* 20ul sizes contain 0.1% BSA

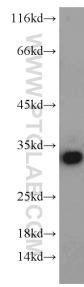
For technical support and original validation data for this product please contact:

T: 1 (888) 4PTGLAB (1-888-478-4522) (toll free in USA), or 1(312) 455-8498 (outside USA)

E: [proteintech@ptglab.com](mailto:proteintech@ptglab.com)  
W: [ptglab.com](http://ptglab.com)

This product is exclusively available under Proteintech Group brand and is not available to purchase from any other manufacturer.

## Selected Validation Data



A549 cells were subjected to SDS PAGE followed by western blot with 55248-1-AP (GPR35 antibody) at dilution of 1:600 incubated at room temperature for 1.5 hours.