

For Research Use Only

MAT2A Polyclonal ANTIBODY



Catalog Number: 55309-1-AP **1 Publications**

Basic Information

Catalog Number:

55309-1-AP

Size:

150UL, Concentration: 133 µg/ml by Bradford method using BSA as the standard;

Source:

Rabbit

Isotype:

IgG

GenBank Accession Number:

NM_005911

GeneID (NCBI):

4144

Full Name:

methionine adenosyltransferase II, alpha

Calculated MW:

44 kDa

Observed MW:

40-45 kDa

Purification Method:

Antigen affinity purification

Recommended Dilutions:

WB 1:500-1:1000

IP 0.5-4.0 µg for IP and 1:500-1:1000 for WB

Applications

Tested Applications:

IP, WB, ELISA

Cited Applications:

WB

Species Specificity:

human, mouse

Cited Species:

rat

Positive Controls:

WB : HepG2 cells,

IP : HepG2 cells,

Background Information

MAT2A, also named as AMS2, MATA2 and AdoMet synthase 2, belongs to the AdoMet synthase family. It catalyzes the formation of S-adenosylmethionine from methionine and ATP. This antibody is specific to MATA2.

Notable Publications

Author	Pubmed ID	Journal	Application
Wenhua Kuang	28710931	Environ Toxicol Pharmacol	WB

Storage

Storage:

Store at -20°C.

Storage Buffer:

PBS with 0.02% sodium azide and 50% glycerol pH 7.3.

Aliquoting is unnecessary for -20°C storage

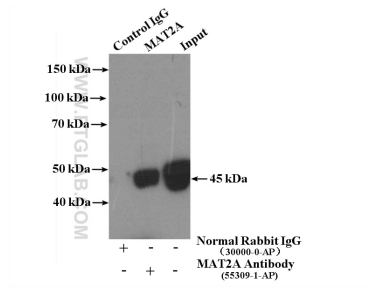
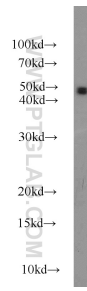
For technical support and original validation data for this product please contact:

T: 1 (888) 4PTGLAB (1-888-478-4522) (toll free in USA), or 1(312) 455-8498 (outside USA)

E: proteintech@ptglab.com
W: ptglab.com

This product is exclusively available under Proteintech Group brand and is not available to purchase from any other manufacturer.

Selected Validation Data



HepG2 cells were subjected to SDS PAGE followed by western blot with 55309-1-AP (MAT2A antibody) at dilution of 1:500 incubated at room temperature for 1.5 hours.

IP Result of anti-MAT2A (IP:55309-1-AP, 4ug; Detection:55309-1-AP 1:500) with HepG2 cells lysate 3200ug.