

For Research Use Only

SEPN1 Polyclonal antibody

Catalog Number: 55333-1-AP

11 Publications



Basic Information

Catalog Number:

55333-1-AP

Size:

150ul, Concentration: 850 ug/ml by Nanodrop and 387 ug/ml by Bradford method using BSA as the standard;

Source:

Rabbit

Isotype:

IgG

GenBank Accession Number:

NM_020451

GeneID (NCBI):

57190

UNIPROT ID:

Q9NZV5

Full Name:

selenoprotein N, 1

Calculated MW:

66 kDa

Observed MW:

70 kDa

Purification Method:

Antigen affinity purification

Recommended Dilutions:

WB: 1:500-1:1000

IHC: 1:50-1:500

Applications

Tested Applications:

WB, IHC, ELISA

Cited Applications:

WB, IHC

Species Specificity:

human, mouse, rat

Cited Species:

human, mouse, rat

Positive Controls:

WB: A549 cells, NIH/3T3 cells

IHC: mouse skeletal muscle tissue, rat skeletal muscle tissue, mouse uterus tissue, mouse lung tissue

Note-IHC: suggested antigen retrieval with TE buffer pH 9.0; (*) Alternatively, antigen retrieval may be performed with citrate buffer pH 6.0

Background Information

SEPN1 (Selenoprotein N, 1) is a selenoprotein that plays a crucial role in maintaining cellular redox homeostasis and calcium homeostasis. It is encoded by the SEPN1 gene and is widely expressed in various tissues, particularly in skeletal muscle. (PMID: 32661288)

Notable Publications

Author	Pubmed ID	Journal	Application
Tai-Jung Lee	36336122	Arch Biochem Biophys	WB
Dian-Guang Zhang	33805536	Antioxidants (Basel)	WB
Chih-Hung Guo	33805447	Mar Drugs	WB

Storage

Storage:

Store at -20°C. Stable for one year after shipment.

Storage Buffer:

PBS with 0.02% sodium azide and 50% glycerol, pH7.3

Aliquoting is unnecessary for -20°C storage

*** 20ul sizes contain 0.1% BSA

For technical support and original validation data for this product please contact:

T: 1 (888) 4PTGLAB (1-888-478-4522) (toll free in USA), or 1(312) 455-8498 (outside USA)

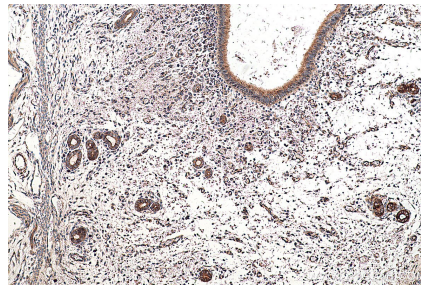
E: proteintech@ptglab.com
W: ptglab.com

This product is exclusively available under Proteintech Group brand and is not available to purchase from any other manufacturer.

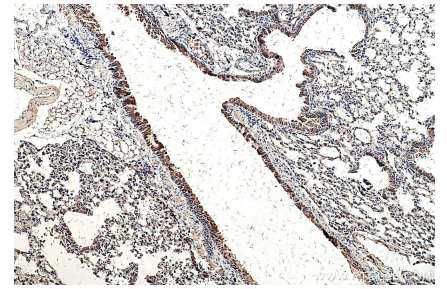
Selected Validation Data



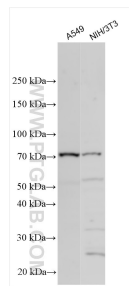
Immunohistochemical analysis of paraffin-embedded rat skeletal muscle tissue slide using 55333-1-AP (SEPN1 antibody) at dilution of 1:2000 (under 10x lens). Heat mediated antigen retrieval with Tris-EDTA buffer (pH 9.0).



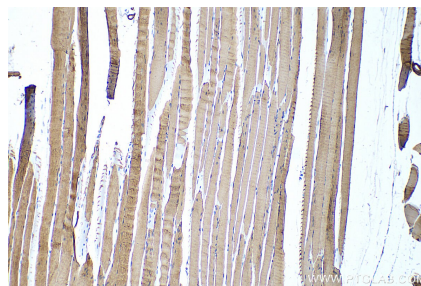
Immunohistochemical analysis of paraffin-embedded mouse uterus tissue slide using 55333-1-AP (SEPN1 antibody) at dilution of 1:2000 (under 10x lens). Heat mediated antigen retrieval with Tris-EDTA buffer (pH 9.0).



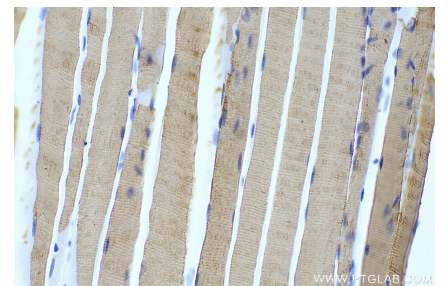
Immunohistochemical analysis of paraffin-embedded mouse lung tissue slide using 55333-1-AP (SEPN1 antibody) at dilution of 1:2000 (under 10x lens). Heat mediated antigen retrieval with Tris-EDTA buffer (pH 9.0).



Various lysates were subjected to SDS PAGE followed by western blot with 55333-1-AP (SEPN1 antibody) at dilution of 1:600 incubated at room temperature for 1.5 hours.



Immunohistochemical analysis of paraffin-embedded mouse skeletal muscle tissue slide using 55333-1-AP (SEPN1 antibody) at dilution of 1:200 (under 10x lens). Heat mediated antigen retrieval with Tris-EDTA buffer (pH 9.0).



Immunohistochemical analysis of paraffin-embedded mouse skeletal muscle tissue slide using 55333-1-AP (SEPN1 antibody) at dilution of 1:200 (under 40x lens). Heat mediated antigen retrieval with Tris-EDTA buffer (pH 9.0).