

# HLA-A

## Polyclonal ANTIBODY

Catalog Number: 55383-1-AP

### Basic Information

<b>Catalog Number:</b> 55383-1-AP	<b>GenBank Accession Number:</b> NM_002116	<b>Recommended Dilutions:</b> WB 1:500-1:2000 IHC 1:20-1:200
<b>Size:</b> 26 µg/150 µl	<b>GeneID (NCBI):</b> 3105	
<b>Source:</b> Rabbit	<b>Full Name:</b> major histocompatibility complex, class I, A	
<b>Isotype:</b> IgG	<b>Calculated MW:</b> 41 kDa	
<b>Purification Method:</b> Antigen affinity purification	<b>Observed MW:</b> 41-44 kDa	
<b>Immunogen Catalog Number:</b>		

### Applications

**Tested Applications:**

IHC, WB, ELISA

**Species Specificity:**

human

**Note: suggested antigen retrieval with *TE* buffer pH 9.0; (\*) Alternatively, antigen retrieval may be performed with *citrate* buffer pH 6.0**

**Positive Controls:**

WB : HepG2 cells; HeLa cells

IHC : human kidney tissue; human small intestine tissue

### Background Information

Human major histocompatibility complex (MHC) antigens, also referred to as human leukocyte antigens (HLA), are encoded by genes located on the short arm of chromosome 6 (p21.3). There are two classes of HLA antigens: class I (HLA-A, B and C) and class II (HLA-D). This class I molecules are polymorphic membrane glycoproteins composed of a heavy (alpha) chain (44 kDa) which is encoded by a HLA class I gene (HLA-A, B or C), and  $\beta$ 2-microglobulin light (beta) chain (12 kDa). They are involved in the presentation of foreign antigens to the immune system. (PMID: 667938; 3375250)

### Notable Publications

Author	Pubmed ID	Journal	Application
--------	-----------	---------	-------------

### Storage

**Storage:**

Store at -20°C. Stable for one year after shipment.

**Storage Buffer:**

PBS with 0.02% sodium azide and 50% glycerol pH 7.3.

Aliquoting is unnecessary for -20°C storage

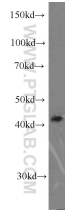
For technical support and original validation data for this product please contact:

T: 1 (888) 4PTGLAB (1-888-478-4522) (toll free in USA), or 1(312) 455-8498 (outside USA)

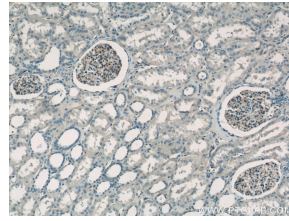
E: [proteintech@ptglab.com](mailto:proteintech@ptglab.com)  
 W: [ptglab.com](http://ptglab.com)

This product is exclusively available under Proteintech Group brand and is not available to purchase from any other manufacturer.

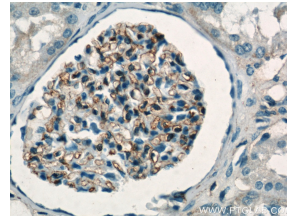
## Selected Validation Data



HepG2 cells were subjected to SDS PAGE followed by western blot with 55383-1-AP(HLA-A antibody) at dilution of 1:1000 incubated at room temperature for 1.5 hours



Immunohistochemistry of paraffin-embedded human kidney tissue slide using 55383-1-AP(HLA-A Antibody) at dilution of 1:50 (under 10x lens)



Immunohistochemistry of paraffin-embedded human kidney tissue slide using 55383-1-AP(HLA-A Antibody) at dilution of 1:50 (under 40x lens)