

For Research Use Only

ESR2 Beta 6 Polyclonal antibody



Catalog Number: 55471-1-AP

Basic Information

Catalog Number: 55471-1-AP	GenBank Accession Number: NM_001437	Purification Method: Antigen affinity purification
Size: 150ul , Concentration: 1000 µg/ml by Nanodrop and 340 µg/ml by Bradford method using BSA as the standard;	GeneID (NCBI): 2100	Recommended Dilutions: WB 1:500-1:1000 IHC 1:50-1:500 IF 1:200-1:800
Source: Rabbit	Full Name: estrogen receptor 2 (ER beta)	
Isotype: IgG	Calculated MW: 42 kDa	
	Observed MW: 42 kDa	

Applications

Tested Applications:

IF, IHC, WB, ELISA

Species Specificity:

human, mouse

Note-IHC: suggested antigen retrieval with TE buffer pH 9.0; (*) Alternatively, antigen retrieval may be performed with citrate buffer pH 6.0

Positive Controls:

WB : mouse spleen tissue,

IHC : human prostate cancer tissue, human cervix tissue

IF : HeLa cells,

Background Information

Estrogen receptor-beta (ESR2) is a member of the superfamily of nuclear receptors, which can transduce extracellular signals into transcriptional responses. It binds estrogens with an affinity similar to that of ESR1, and activates expression of reporter genes containing estrogen response elements (ERE) in an estrogen-dependent manner. DNA-binding by ESR1 and ESR2 is rapidly lost at 37 degrees Celsius in the absence of ligand while in the presence of 17 beta-estradiol and 4-hydroxy-tamoxifen loss in DNA-binding at elevated temperature is more gradual

Storage

Storage:

Store at -20°C.

Storage Buffer:

PBS with 0.02% sodium azide and 50% glycerol pH 7.3.

Aliquoting is unnecessary for -20°C storage

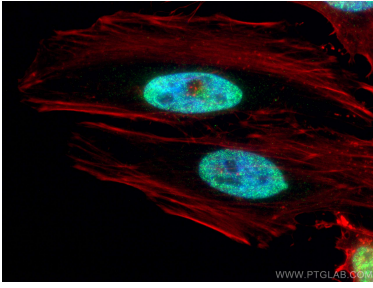
For technical support and original validation data for this product please contact:

T: 1 (888) 4PTGLAB (1-888-478-4522) (toll free in USA), or 1(312) 455-8498 (outside USA)

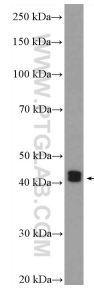
E: proteintech@ptglab.com
W: ptglab.com

This product is exclusively available under Proteintech Group brand and is not available to purchase from any other manufacturer.

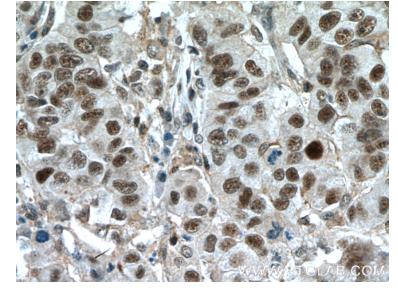
Selected Validation Data



Immunofluorescent analysis of (4% PFA) fixed HeLa cells using ESR2 Beta 6 antibody (55471-1-AP) at dilution of 1:400 and CoraLite®488-Conjugated AffiniPure Goat Anti-Rabbit IgG(H+L), CL594-phalloidin (red), DAPI (Blue).



mouse spleen tissue were subjected to SDS PAGE followed by western blot with 55471-1-AP (ESR2 Beta-6 Antibody) at dilution of 1:600 incubated at room temperature for 1.5 hours.



Immunohistochemical analysis of paraffin-embedded human prostate cancer tissue slide using 55471-1-AP (ESR2 Beta-6 Antibody) at dilution of 1:200 (under 40x lens). Heat mediated antigen retrieval with Tris-EDTA buffer (pH 9.0).