

For Research Use Only

VGLUT1 Polyclonal ANTIBODY



Catalog Number: 55491-1-AP

1 Publications

Basic Information

Catalog Number:
55491-1-AP

Size:
32 µg/150 µl

Source:
Rabbit

Isotype:
IgG

Purification Method:
Antigen affinity purification

Immunogen Catalog Number:

GenBank Accession Number:
NM_020309

GeneID (NCBI):
57030

Full Name:
solute carrier family 17 (sodium-dependant
inorganic phosphate cotransporter), member 7

Calculated MW:
62 kDa

Observed MW:

Recommended Dilutions:
IHC 1:20-1:200

Applications

Tested Applications:
FC, IHC, ELISA

Cited Applications:
IF

Species Specificity:
human

Cited Species:
rat

**Note: suggested antigen retrieval with TE
buffer pH 9.0; (*) Alternatively, antigen
retrieval may be performed with citrate
buffer pH 6.0**

Positive Controls:

IHC : human brain tissue; mouse brain tissue, rat
brain tissue

Background Information

Notable Publications

Author	Pubmed ID	Journal	Application
Juan Mb	30347267	Neurobiol Dis	IF

Storage

Storage:

Store at -20°C. Stable for one year after shipment.

Storage Buffer:

PBS with 0.02% sodium azide and 50% glycerol pH 7.3.

Aliquoting is unnecessary for -20°C storage

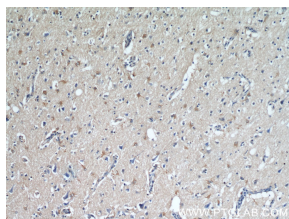
For technical support and original validation data for this
product please contact:

T: 1 (888) 4PTGLAB (1-888-478-4522) (toll
free in USA), or 1(312) 455-8498 (outside
USA)

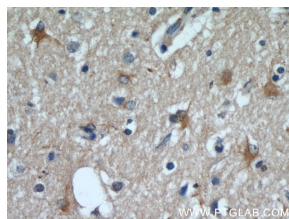
E: proteintech@ptglab.com
W: ptglab.com

This product is exclusively available under
Proteintech Group brand and is not available to
purchase from any other manufacturer.

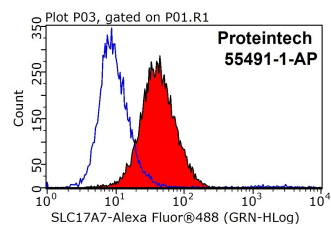
Selected Validation Data



Immunohistochemical of paraffin-embedded human brain using 55491-1-AP(VGLUT1) antibody at dilution of 1:50 (under 10x lens)



Immunohistochemical of paraffin-embedded human brain using 55491-1-AP(VGLUT1) antibody at dilution of 1:50 (under 40x lens)



1x10⁶ SH-SY5Y cells were stained with 0.2 μ g VGLUT1 antibody (55491-1-AP, red) and control antibody (blue). Fixed with 90% MeOH blocked with 3% BSA (30 min). Alexa Fluor 488-conjugated AffiniPure Goat Anti-Rabbit IgG(H+L) with dilution 1:1000.