

For Research Use Only

# MME,CD10 Monoclonal ANTIBODY



Catalog Number:60034-3-Ig

## Basic Information

Catalog Number:

60034-3-Ig

Size:

150UL, Concentration: 1453 µg/ml by 4311

Bradford method using BSA as the standard;

Source:

Mouse

Isotype:

IgG2b

Immunogen Catalog Number:

AG0427

GenBank Accession Number:

BC101658

GeneID (NCBI):

4311

Full Name:

membrane metallo-endopeptidase

Calculated MW:

750 aa, 86 kDa

Observed MW:

100 kDa

Purification Method:

Caprylic acid/ammonium sulfate precipitation

CloneNo.:

4B9D9

Recommended Dilutions:

WB 1:500-1:2000

IHC 1:100-1:400

## Applications

Tested Applications:

IHC, WB, ELISA

Species Specificity:

human, pig, mouse

**Note-IHC: suggested antigen retrieval with TE buffer pH 9.0; (\*) Alternatively, antigen retrieval may be performed with citrate buffer pH 6.0**

Positive Controls:

WB: pig kidney tissue, mouse kidney tissue

IHC: human renal cell carcinoma tissue, human kidney tissue, human tonsil tissue, mouse kidney tissue, mouse liver tissue

## Background Information

MME is also names as neprilysin,CALLA,NEP,SFE,CD10 and belongs to the peptidase M13 family.It is a glycoprotein that is particularly abundant in kidney, where it is present on the brush border of proximal tubules and on glomerular epithelium.CD10 has been considered a useful marker in the diagnosis of renal carcinomas, because of its expression in clear cell and papillary renal cell carcinomas and its absence in chromophobe renal cell carcinomas(PMID:15286660).

## Storage

Storage:

Store at -20°C. Stable for one year after shipment.

Storage Buffer:

PBS with 0.1% sodium azide and 50% glycerol pH 7.3.

Aliquoting is unnecessary for -20°C storage

For technical support and original validation data for this product please contact:

T: 1 (888) 4PTGLAB (1-888-478-4522) (toll free in USA), or 1(312) 455-8498 (outside USA)

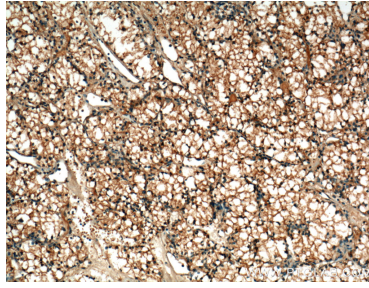
E: proteintech@ptglab.com  
W: ptglab.com

**This product is exclusively available under Proteintech Group brand and is not available to purchase from any other manufacturer.**

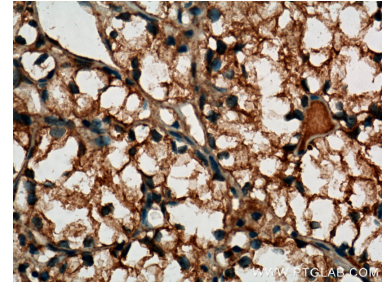
## Selected Validation Data



pig kidney tissue were subjected to SDS PAGE followed by western blot with 60034-3-Ig (MME,CD10 Antibody) at dilution of 1:1000 incubated at room temperature for 1.5 hours.



Immunohistochemical analysis of paraffin-embedded human renal cell carcinoma tissue slide using 60034-3-Ig (MME,CD10 Antibody) at dilution of 1:400 (under 10x lens). Heat mediated antigen retrieval with Tris-EDTA buffer (pH 9.0).



Immunohistochemical analysis of paraffin-embedded human renal cell carcinoma tissue slide using 60034-3-Ig (MME,CD10 Antibody) at dilution of 1:400 (under 40x lens). Heat mediated antigen retrieval with Tris-EDTA buffer (pH 9.0).