

For Research Use Only

Annexin A2 Monoclonal antibody

Catalog Number: 60051-1-Ig

Featured Product

11 Publications



Basic Information

Catalog Number:

60051-1-Ig

Size:

150ul, Concentration: 1300 ug/ml by 302 Nanodrop and 1000 ug/ml by Bradford method using BSA as the standard;

Source:

Mouse

Isotype:

IgG2b

Immunogen Catalog Number:

AG1777

GenBank Accession Number:

BC016774

GeneID (NCBI):

ENSEMBL Gene ID: ENSG00000182718

UNIPROT ID:

P07355

Full Name:

annexin A2

Calculated MW:

339 aa, 39 kDa

Observed MW:

35-38 kDa

Purification Method:

Protein A purification

CloneNo.:

3H1B11

Recommended Dilutions:

WB: 1:5000-1:20000

IP: 0.5-4.0 ug for 1.0-3.0 mg of total protein lysate

IHC: 1:50-1:500

IF/ICC: 1:250-1:1000

Applications

Tested Applications:

WB, IHC, IF/ICC, IP, ELISA

Cited Applications:

WB, IF, IP, ColP

Species Specificity:

human, mouse, rat

Cited Species:

human, mouse

Note-IHC: suggested antigen retrieval with TE buffer pH 9.0; (*) Alternatively, antigen retrieval may be performed with citrate buffer pH 6.0

Positive Controls:

WB: K-562 cells, HEK-293 cells, THP-1 cells, A431 cells, A549 cells, HeLa cells, HepG2 cells, HSC-T6 cells, NIH/3T3 cells, 4T1 cells

IP: HeLa cells,

IHC: human breast cancer tissue, human lung cancer tissue, human skin cancer tissue, human gliomas tissue

IF/ICC: T-47D cells, HeLa cells, MCF-7 cells

Background Information

Annexin A2 (ANXA2), also named Annexin-2 or Lipocortin II, is a Ca²⁺ binding protein that is up-regulated in virally transformed cell lines and human tumors. This calcium-regulated membrane-binding protein, whose affinity for calcium is greatly enhanced by anionic phospholipids, may cross-link plasma membrane phospholipids with actin and the cytoskeleton and be involved with exocytosis. Heat-stress response may also involve Annexin-2.

Notable Publications

Author	Pubmed ID	Journal	Application
Xiao Li	31757778	EBioMedicine	IP
Xiaowei Wang	27045038	Infect Immun	
Yuichi Mazaki	39675170	Biochem Biophys Res Commun	WB

Storage

Storage:

Store at -20°C. Stable for one year after shipment.

Storage Buffer:

PBS with 0.02% sodium azide and 50% glycerol, pH7.3

Aliquoting is unnecessary for -20°C storage

*** 20ul sizes contain 0.1% BSA

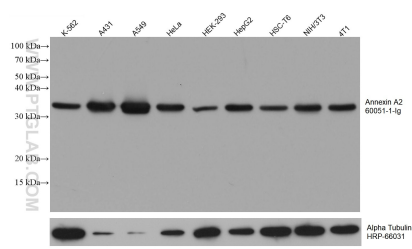
For technical support and original validation data for this product please contact:

T: 1 (888) 4PTGLAB (1-888-478-4522) (toll free in USA), or 1(312) 455-8498 (outside USA)

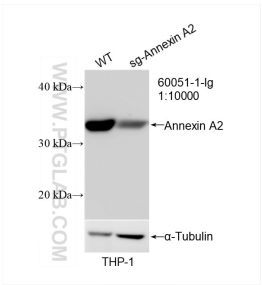
E: proteintech@ptglab.com
W: ptglab.com

This product is exclusively available under Proteintech Group brand and is not available to purchase from any other manufacturer.

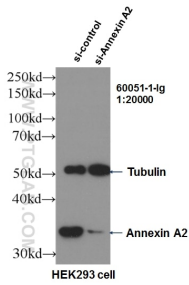
Selected Validation Data



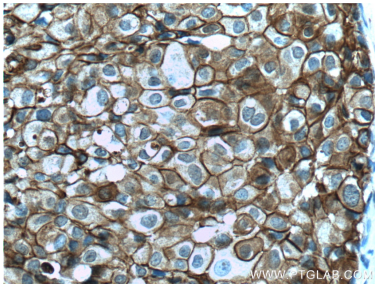
Various lysates were subjected to SDS PAGE followed by western blot with 60051-1-Ig (Annexin A2 antibody) at dilution of 1:20000 incubated at room temperature for 1.5 hours. The membrane was stripped and reblotted with HRP-conjugated Alpha Tubulin Monoclonal antibody (HRP-66031) as loading control.



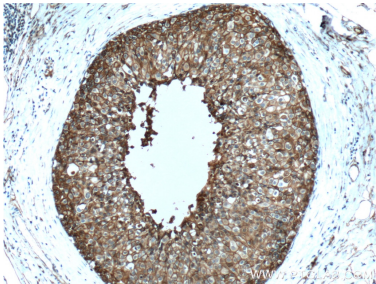
WB result of Annexin A2 antibody (60051-1-Ig; 1:10000; room temperature for 1.5 hours) with wild-type and sg-Annexin A2 transfected THP-1 cells.



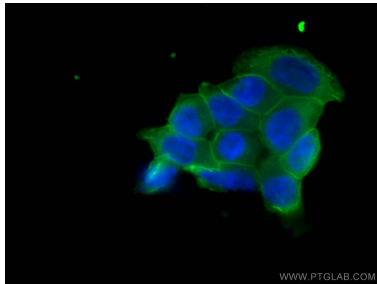
WB result of Annexin A2 antibody (60051-1-Ig; 1:20,000) with si-Control and si-Annexin A2 transfected HEK293 cells.



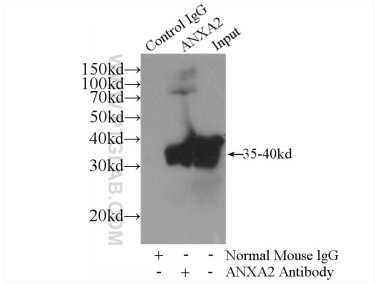
Immunohistochemical analysis of paraffin-embedded human breast cancer tissue slide using 60051-1-Ig (Annexin A2 Antibody) at dilution of 1:200 (under 40x lens). Heat mediated antigen retrieval with Tris-EDTA buffer (pH 9.0).



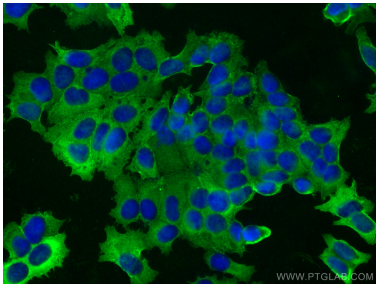
Immunohistochemical analysis of paraffin-embedded human breast cancer tissue slide using 60051-1-Ig (Annexin A2 Antibody) at dilution of 1:200 (under 10x lens). Heat mediated antigen retrieval with Tris-EDTA buffer (pH 9.0).



Immunofluorescent analysis of (-20°C Ethanol) fixed T-47D cells using 60051-1-Ig (Annexin A2 antibody), at dilution of 1:500 and CoraLite® 488-Conjugated AffiniPure Goat Anti-Mouse IgG(H+L).



IP result of anti-Annexin A2 (IP:60051-1-Ig, 4ug; Detection:60051-1-Ig 1:1500) with HeLa cells lysate 2400ug.



Immunofluorescent analysis of (-20°C Methanol) fixed MCF-7 cells using Annexin A2 antibody (60051-1-Ig, Clone: 3H1B11) at dilution of 1:800 and CoraLite® 488-Conjugated AffiniPure Goat Anti-Mouse IgG(H+L) (SA00013-1).