

For Research Use Only

# Neuropilin 1/CD304 Monoclonal antibody

Catalog Number: 60067-1-Ig

Featured Product

25 Publications



## Basic Information

Catalog Number:

60067-1-Ig

Size:

150ul, Concentration: 1000 ug/ml by Nanodrop;

Source:

Mouse

Isotype:

IgG1

Immunogen Catalog Number:

AG0931

GenBank Accession Number:

BC007737

GeneID (NCBI):

8829

UNIPROT ID:

O14786

Full Name:

neuropilin 1

Calculated MW:

103 kDa

Observed MW:

130 kDa

Purification Method:

Protein G purification

CloneNo.:

2H3F6

Recommended Dilutions:

WB: 1:1000-1:6000

IF/ICC: 1:50-1:500

## Applications

Tested Applications:

WB, IF/ICC, ELISA

Cited Applications:

WB, IF, IP, ColP

Species Specificity:

human, pig, rabbit

Cited Species:

human, mouse, rabbit, xenopus

Positive Controls:

WB : human placenta tissue, fetal human brain tissue, human plasma, 37°C incubated human placenta tissue, pig brain tissue, HeLa cells, rabbit heart tissue, MDA-MB-231 cells, A549 cells, pig heart tissue

IF/ICC : SH-SY5Y cells, human embryonic stem cells

## Background Information

Neuropilin-1 (NRP1) is a 130-140 kDa transmembrane glycoprotein expressed by endothelial, dendritic, and regulatory T cells, as well as several other normal cell types and malignant tumor cells. NRP1 was first identified as a semaphorin (SEMA) receptor, involved in axonal guidance in embryonic development. NRP1 was also shown to act as a receptor for vascular endothelial growth factor (VEGF) and a promoter of angiogenesis through its interaction with VEGF-A165 (and other VEGFs) and the receptor tyrosine kinase (RTK) VEGF-R2. NRP1 plays versatile roles in angiogenesis, axon guidance, cell survival, migration, and invasion.

## Notable Publications

Author	Pubmed ID	Journal	Application
Chunxi Liu	25204970	Mol Cell Biochem	WB
Emmanuel Laplantine	36093378	iScience	WB
Max Koppers	31746735	Elife	IF

## Storage

Storage:

Store at -20°C. Stable for one year after shipment.

Storage Buffer:

PBS with 0.02% sodium azide and 50% glycerol, pH7.3

Aliquoting is unnecessary for -20°C storage

\*\*\* 20ul sizes contain 0.1% BSA

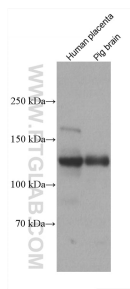
For technical support and original validation data for this product please contact:

T: 1 (888) 4PTGLAB (1-888-478-4522) (toll free in USA), or 1(312) 455-8498 (outside USA)

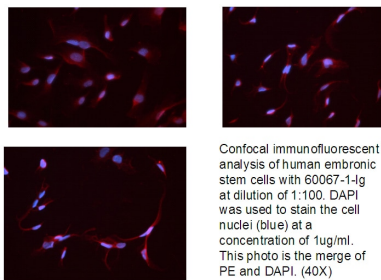
E: [proteintech@ptglab.com](mailto:proteintech@ptglab.com)  
W: [ptglab.com](http://ptglab.com)

This product is exclusively available under Proteintech Group brand and is not available to purchase from any other manufacturer.

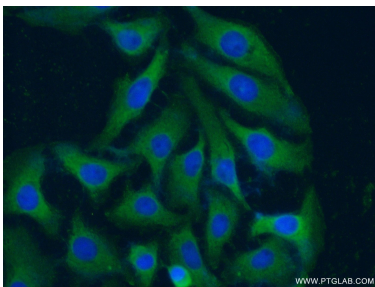
## Selected Validation Data



Various lysates were subjected to SDS PAGE followed by western blot with 60067-1-Ig (Neuropilin 1 antibody) at dilution of 1:3000 incubated at room temperature for 1.5 hours.



Confocal immunofluorescent analysis of human embryonic stem cells with 60067-1-Ig at dilution of 1:100. DAPI was used to stain the cell nuclei (blue) at a concentration of 1ug/ml. This photo is the merge of PE and DAPI. (40X).



Immunofluorescent analysis of (-20°C Ethanol ) fixed SH-SY5Y cells using 60067-1-Ig(Neuropilin 1 antibody) at dilution of 1:100 and Alexa Fluor 488-conjugated AffiniPure Goat Anti-Mouse IgG(H+L).