

For Research Use Only

# Septin 2 Monoclonal antibody

Catalog Number: 60075-1-Ig

Featured Product

14 Publications



## Basic Information

<b>Catalog Number:</b> 60075-1-Ig	<b>GenBank Accession Number:</b> BC014455	<b>Purification Method:</b> Protein G purification
<b>Size:</b> 150ul , Concentration: 1000 µg/ml by Nanodrop;	<b>GeneID (NCBI):</b> 4735	<b>CloneNo.:</b> 2F3B2
<b>Source:</b> Mouse	<b>Full Name:</b> septin 2	<b>Recommended Dilutions:</b> WB 1:20000-1:100000 IHC 1:50-1:2000 IF 1:20-1:200
<b>Isotype:</b> IgG1	<b>Calculated MW:</b> 41 kDa	
<b>Immunogen Catalog Number:</b> AG1946	<b>Observed MW:</b> 42-45 kDa	

## Applications

**Tested Applications:**  
FC, IF, IHC, WB, ELISA

**Cited Applications:**  
CoIP, IF, WB

**Species Specificity:**  
human, mouse, rat

**Cited Species:**  
human, mouse

**Note-IHC: suggested antigen retrieval with TE buffer pH 9.0; (\*) Alternatively, antigen retrieval may be performed with citrate buffer pH 6.0**

**Positive Controls:**

**WB:** LNCaP cells, Jurkat cells, fetal human brain tissue, human testis tissue, HeLa cells, HEK-293 cells, HepG2 cells, K-562 cells, HSC-T6 cells, NIH/3T3 cells, 4T1 cells, MCF-7 cells, HSC T6 cells, ROS1728 cells, Neuro-2A cells

**IHC:** human renal cell carcinoma tissue, human brain tissue, human liver cancer tissue

**IF:** hTERT-RPE cells, K-562 cells

## Background Information

Septin 2, also named as DIFF6, KIAA0158, NEDD5, belongs to the septin family. It is a filament-forming cytoskeletal GTPase. Septin 2 is required for normal organization of the actin cytoskeleton. It plays a role in ciliogenesis and collective cell movements. Septin 2 is coordinated expression with Septin 6 and Septin 7. (PMID:21737677)

## Notable Publications

Author	Pubmed ID	Journal	Application
Lei Wang	34782749	Cell Res	WB
Damián Lobato-Márquez	29752866	Cytoskeleton (Hoboken)	WB,IF
Oleg V Kim	35832887	iScience	CoIP

## Storage

**Storage:**

Store at -20°C. Stable for one year after shipment.

**Storage Buffer:**

PBS with 0.1% sodium azide and 50% glycerol pH 7.3.

Aliquoting is unnecessary for -20°C storage

\*\*\* 20ul sizes contain 0.1% BSA

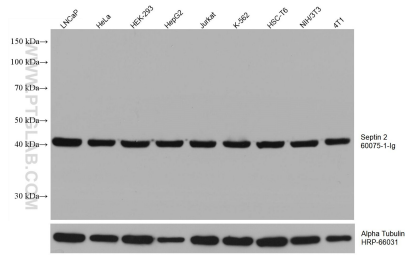
For technical support and original validation data for this product please contact:

T: 1 (888) 4PTGLAB (1-888-478-4522) (toll free in USA), or 1(312) 455-8498 (outside USA)

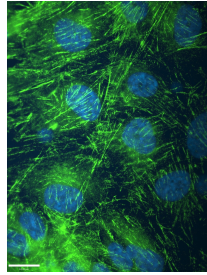
E: proteintech@ptglab.com  
W: ptglab.com

This product is exclusively available under Proteintech Group brand and is not available to purchase from any other manufacturer.

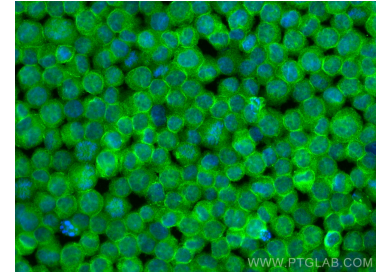
## Selected Validation Data



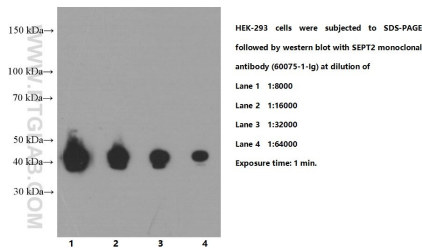
Various lysates were subjected to SDS PAGE followed by western blot with 60075-1-Ig (Septin 2 antibody) at dilution of 1:100000 incubated at room temperature for 1.5 hours. The membrane was stripped and reblotted with HRP-conjugated Alpha Tubulin Monoclonal antibody (HRP-66031) as loading control.



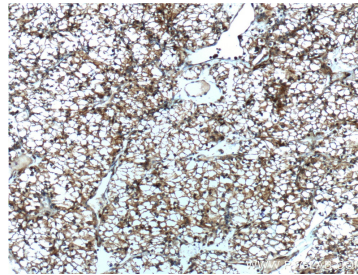
IF result of anti-Septin 2 (60075-1-Ig, 1:1000) with hTERT-RPE cell by Dr. Moshe Kim. Green: Septin 2. Blue: DNA. 1% PFA fixed.



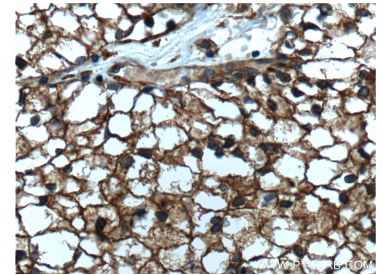
Immunofluorescent analysis of (4% PFA) fixed K-562 cells using Septin 2 antibody (60075-1-Ig, Clone: 2F3B2) at dilution of 1:800 and CoraLite@488-Conjugated AffiniPure Goat Anti-Mouse IgG(H+L).



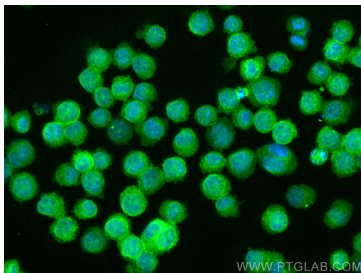
HEK-293 cells were subjected to SDS PAGE followed by western blot with 60075-1-Ig (Septin 2 Antibody) at various dilutions incubated at room temperature for 1.5 hours.



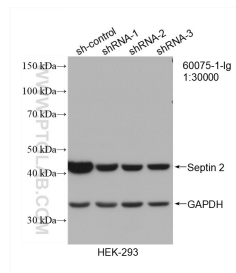
Immunohistochemical analysis of paraffin-embedded human renal cell carcinoma tissue slide using 60075-1-Ig (Septin 2 Antibody) at dilution of 1:800 (under 10x lens). Heat mediated antigen retrieval with Tris-EDTA buffer (pH 9.0).



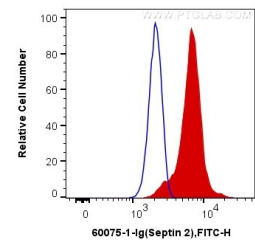
Immunohistochemical analysis of paraffin-embedded human renal cell carcinoma tissue slide using 60075-1-Ig (Septin 2 Antibody) at dilution of 1:800 (under 40x lens). Heat mediated antigen retrieval with Tris-EDTA buffer (pH 9.0).



Immunofluorescent analysis of (4% PFA) fixed K-562 cells using Septin 2 antibody (60075-1-Ig, Clone: 2F3B2) at dilution of 1:800 and CoraLite@488-Conjugated AffiniPure Goat Anti-Mouse IgG(H+L).



WB result of Septin 2 antibody (60075-1-Ig; 1:30000; incubated at room temperature for 1.5 hours) with sh-Control and sh-Septin 2 transfected HEK-293 cells.



$1 \times 10^6$  K-562 cells were intracellularly stained with 0.4 ug Anti-Human Septin 2 (60075-1-Ig, Clone: 2F3B2) and CoraLite@488-Conjugated AffiniPure Goat Anti-Mouse IgG(H+L) at dilution 1:1000 (red), or 0.4 ug Control Antibody. Cells were fixed with 4% PFA and permeabilized with Flow Cytometry Perm Buffer (PF00011-C).