

For Research Use Only

NR1H3 Monoclonal antibody

Catalog Number: 60134-1-Ig **1 Publications**



Basic Information

Catalog Number: 60134-1-Ig	GenBank Accession Number: BC041172	Purification Method: Protein G purification
Size: 150ul , Concentration: 1355 µg/ml by Nanodrop and 500 µg/ml by Bradford method using BSA as the standard;	GeneID (NCBI): 10062	CloneNo.: 4A4F7
Source: Mouse	Full Name: nuclear receptor subfamily 1, group H, member 3	Recommended Dilutions: IF 1:10-1:100
Isotype: IgG1	Calculated MW: 50 kDa	
Immunogen Catalog Number: AG6184	Observed MW: 50 kDa 44 kDa	

Applications

Tested Applications: IF, WB, ELISA	Positive Controls:
Cited Applications: WB	WB : T-47D cells, HepG2 cells, MCF-7 cells, COLO 320 cells
Species Specificity: human, rat, pig	IF : HepG2 cells,
Cited Species: mouse	

Background Information

NR1H3, also known as LXRA, is a liver X receptors, which form a subfamily of the nuclear receptor superfamily and are key regulators of macrophage function, controlling transcriptional programs involved in lipid homeostasis and inflammation. It's also a ligand-activated LXRs and forms heterodimers with retinoid X receptor, then participates in regulating expression of target genes containing LXR response elements.

Notable Publications

Author	Pubmed ID	Journal	Application
Xin Shen	34351342	Food Funct	WB

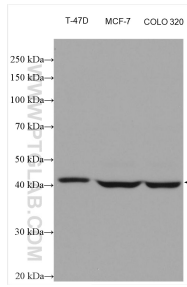
Storage

Storage:
Store at -20°C. Stable for one year after shipment.
Storage Buffer:
PBS with 0.02% sodium azide and 50% glycerol pH 7.3.
Aliquoting is unnecessary for -20°C storage

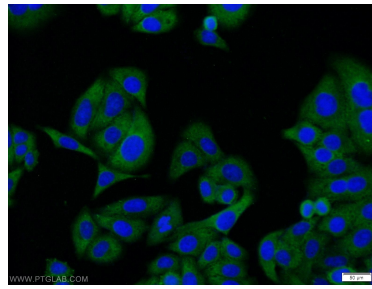
For technical support and original validation data for this product please contact:
T: 1 (888) 4PTGLAB (1-888-478-4522) (toll free in USA), or 1(312) 455-8498 (outside USA)
E: proteintech@ptglab.com
W: ptglab.com

This product is exclusively available under Proteintech Group brand and is not available to purchase from any other manufacturer.

Selected Validation Data



Various lysates were subjected to SDS PAGE followed by western blot with 60134-1-Ig (NR1H3 antibody) at dilution of 1:5000 incubated at room temperature for 1.5 hours.



Immunofluorescent analysis of HepG2 cells using 60134-1-Ig (NR1H3 antibody) at dilution of 1:25 and Alexa Fluor 488-conjugated AffiniPure Goat Anti-Mouse IgG (H+L).