

Chromogranin A Monoclonal ANTIBODY

Catalog Number: 60135-1-Ig

1 Publications

Basic Information

Catalog Number:
60135-1-Ig

Size:
150 µg/150 µl

Source:
Mouse

Isotype:
IgG1

Purification Method:
Protein G purification

Immunogen Catalog Number:
AG0807

GenBank Accession Number:
BC006459

GeneID (NCBI):
1113

Full Name:
chromogranin A (parathyroid secretory protein 1)

Calculated MW:
51 kDa

Observed MW:
70 kDa

Recommended Dilutions:

WB 1:1000-1:4000
IHC 1:5000-1:80000
IF 1:50-1:500

Applications

Tested Applications:

IF, IHC, WB, ELISA

Cited Applications:

WB

Species Specificity:

human, rat, pig, mouse

Note-IHC: suggested antigen retrieval with TE buffer pH 9.0; (*) Alternatively, antigen retrieval may be performed with citrate buffer pH 6.0

Positive Controls:

WB : rat pancreas tissue; pig pancreas tissue, human adrenal gland tissue, PC-3 cells

IHC : human pancreas tissue; human colon tissue

IF : PC-12 cells;

Background Information

Chromogranin A is a member of the granin family of neuroendocrine secretory proteins. It is located in secretory vesicles of neurons and endocrine cells. Chromogranin A is the precursor to several functional peptides including vasostatin, pancreastatin, catestatin and parastatin. These peptides negatively modulate the neuroendocrine function of the releasing cell (autocrine) or nearby cells (paracrine). CgA is one of the most used tumor markers in NETs (neuroendocrine tumors), and elevated CgA concentrations have been demonstrated in serum or plasma of patients with different types of these tumors.

Notable Publications

Author	Pubmed ID	Journal	Application
Trine Mæxel	31197210	Sci Rep	WB

Storage

Storage:

Store at -20°C. Stable for one year after shipment.

Storage Buffer:

PBS with 0.1% sodium azide and 50% glycerol pH 7.3.

Aliquoting is unnecessary for -20°C storage

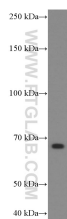
For technical support and original validation data for this product please contact:

T: 1 (888) 4PTGLAB (1-888-478-4522) (toll free in USA), or 1(312) 455-8498 (outside USA)

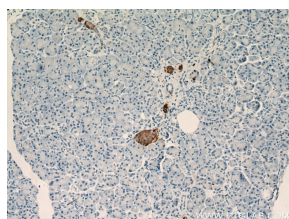
E: proteintech@ptglab.com
W: ptglab.com

This product is exclusively available under Proteintech Group brand and is not available to purchase from any other manufacturer.

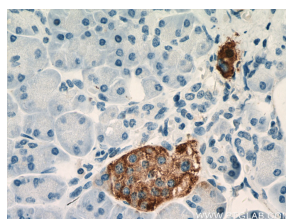
Selected Validation Data



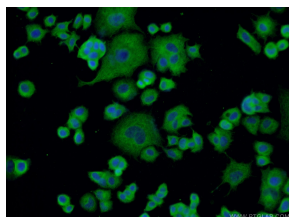
rat pancreas tissue were subjected to SDS PAGE followed by western blot with 60135-1-Ig (Chromogranin A antibody) at dilution of 1:2000 incubated at room temperature for 1.5 hours



Immunohistochemical analysis of paraffin-embedded human pancreas tissue slide using 60135-1-Ig (Chromogranin A antibody) at dilution of 1:80000 (under 10x lens) heat mediated antigen retrieved with Tris-EDTA buffer (pH9).



Immunohistochemical analysis of paraffin-embedded human pancreas tissue slide using 60135-1-Ig (Chromogranin A antibody) at dilution of 1:80000 (under 40x lens) heat mediated antigen retrieved with Tris-EDTA buffer (pH9).



Immunofluorescent analysis of (-20°C Ethanol) fixed PC-12 cells using 60135-1-Ig (Chromogranin A antibody) at dilution of 1:100 and Alexa Fluor 488-conjugated AffiniPure Goat Anti-Mouse IgG(H+L)