

PAX8

Monoclonal ANTIBODY

Catalog Number: 60145-4-Ig

1 Publications

Basic Information

Catalog Number:
60145-4-Ig

Size:
150 µg/150 µl

Source:
Mouse

Isotype:
IgG2b

Purification Method:
Protein A purification

Immunogen Catalog Number:
AG0306

GenBank Accession Number:
BC001060

GeneID (NCBI):
7849

Full Name:
paired box 8

Calculated MW:
48 kDa

Observed MW:
48 kDa

Recommended Dilutions:

WB 1:1000-1:4000
IHC 1:5000-1:20000
IF 1:50-1:500

Applications

Tested Applications:

IF, IHC, WB, ELISA

Cited Applications:

IHC

Species Specificity:

human

Cited Species:

human

Note-IHC: suggested antigen retrieval with TE buffer pH 9.0; (*) Alternatively, antigen retrieval may be performed with citrate buffer pH 6.0

Positive Controls:

WB : SKOV-3 cells; HepG2 cells, human thyroid gland tissue

IHC : human ovary tumor tissue; human tonsillitis tissue, human thyroid cancer tissue

IF : SKOV-3 cells;

Background Information

PAX8 is a member of the paired box (PAX) family of transcription factors, typically containing a paired box domain and a paired-type homeodomain. It is expressed during organogenesis of the thyroid gland, kidney and Mullerian system. It is thought to regulate the expression of Wilms tumor suppressor (WT1) gene and mutations in PAX8 have been associated with Wilms tumor cells, thyroid and ovarian carcinomas. PAX8 is a useful marker in distinguishing ovarian carcinomas from mammary carcinomas (PMD: 18724243). PAX8 is expressed in a high percentage of ovarian serous, endometrioid, and clear cell carcinomas, but only rarely in primary ovarian mucinous adenocarcinomas.

PAX8 has 5 isoforms with calculated MW 31kd, 34kd, 41kd, 43kd and 48kd. And there is a 60kd band corresponding to the electrophoretic mobility of PAX8 (PMD:15650356).

Notable Publications

Author	Pubmed ID	Journal	Application
Qiu-Yuan Xia	27934879	Mbd Pathol	IHC

Storage

Storage:

Store at -20°C. Stable for one year after shipment.

Storage Buffer:

PBS with 0.1% sodium azide and 50% glycerol pH 7.3.

Aliquoting is unnecessary for -20°C storage

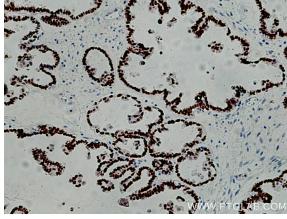
For technical support and original validation data for this product please contact:

T: 1 (888) 4PTGLAB (1-888-478-4522) (toll free in USA), or 1(312) 455-8498 (outside USA)

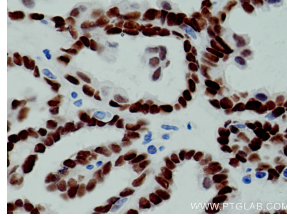
E: proteintech@ptglab.com
W: ptglab.com

This product is exclusively available under Proteintech Group brand and is not available to purchase from any other manufacturer.

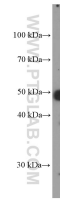
Selected Validation Data



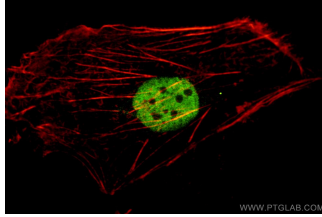
Immunohistochemical analysis of paraffin-embedded human ovary tumor tissue slide using 60145-4-Ig (PAX8 antibody) at dilution of 1:10000 (under 10x lens), heat mediated antigen retrieved with Tris-EDTA buffer(pH9).



Immunohistochemical analysis of paraffin-embedded human ovary tumor tissue slide using 60145-4-Ig (PAX8 antibody) at dilution of 1:10000 (under 40x lens), heat mediated antigen retrieved with Tris-EDTA buffer(pH9).



SKOV-3 cells were subjected to SDS PAGE followed by western blot with 60145-4-Ig (PAX8 Antibody) at dilution of 1:2000 incubated at room temperature for 1.5 hours



Confocal immunofluorescent analysis of (4% PFA) fixed SKOV-3 cells using 60145-4-Ig (PAX8 antibody) at dilution of 1:100 and CoraLite488-Conjugated AffiniPure Goat Anti-Mouse IgG(H+L). Phalloidin stains F-actin (Red).