

For Research Use Only

LCK Monoclonal antibody

Catalog Number: 60162-1-Ig **2 Publications**



Basic Information

Catalog Number: 60162-1-Ig	GenBank Accession Number: BC013200	Purification Method: Protein G purification
Size: 150ul , Concentration: 1300 ug/ml by Nanodrop and 1000 ug/ml by Bradford method using BSA as the standard;	GeneID (NCBI): 3932	CloneNo.: 2D10C2
Source: Mouse	UNIPROT ID: P06239	Recommended Dilutions: WB 1:5000-1:50000 IHC 1:500-1:2000 IF-P 1:200-1:800 IF/ICC 1:400-1:1600
Isotype: IgG1	Full Name: lymphocyte-specific protein tyrosine kinase	
Immunogen Catalog Number: AG7694	Calculated MW: 539 aa, 56 kDa	
	Observed MW: 50-60 kDa	

Applications

Tested Applications: WB, IHC, IF/ICC, IF-P, FC (Intra), ELISA	Positive Controls: WB : NK-92 cells, Jurkat cells, pig thymus tissue, Ramos cells, rat thymus tissue, MOLT-4 cells, MJ cells IHC : human tonsillitis tissue, human lymphoma tissue IF-P : human tonsillitis tissue, IF/ICC : HepG2 cells, FC (Intra) : HepG2 cells,
Cited Applications: WB, IHC, CoIP	
Species Specificity: human, rat, pig	
Cited Species: human	
Note-IHC: suggested antigen retrieval with TE buffer pH 9.0; (*) Alternatively, antigen retrieval may be performed with citrate buffer pH 6.0	

Background Information

LCK(Lymphocyte cell-specific protein-tyrosine kinase) is also named as LSK,p56-LCK and a nonreceptor protein-tyrosine kinase of the SRC oncogene family that is involved in transduction of T-cell receptor-mediated activation. It is implicated in the control of lymphocyte growth by virtue of its overexpression in some lymphoid malignancies and its transforming activity in heterologous systems(PMID:2784463). It has 3 isoforms produced by alternative splicing.

Notable Publications

Author	Pubmed ID	Journal	Application
Chao Wang	35264874	Int J Gen Med	WB,IHC
Nan Yang	39342146	Mol Med	WB,CoIP

Storage

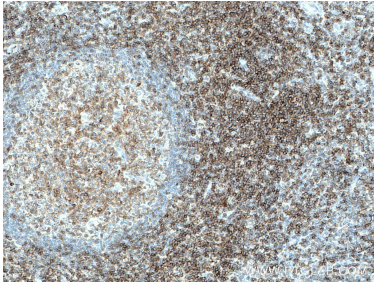
Storage:
Store at -20°C. Stable for one year after shipment.
Storage Buffer:
PBS with 0.02% sodium azide and 50% glycerol, pH7.3
Aliquoting is unnecessary for -20°C storage

*** 20ul sizes contain 0.1% BSA

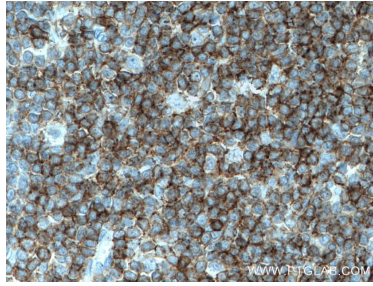
For technical support and original validation data for this product please contact:
T: 1 (888) 4PTGLAB (1-888-478-4522) (toll free in USA), or 1(312) 455-8498 (outside USA)
E: proteintech@ptglab.com
W: ptglab.com

This product is exclusively available under Proteintech Group brand and is not available to purchase from any other manufacturer.

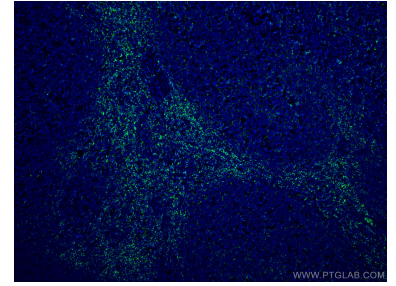
Selected Validation Data



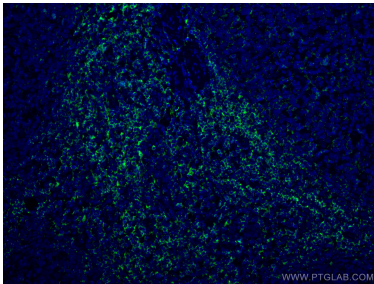
Immunohistochemical analysis of paraffin-embedded human tonsillitis tissue slide using 60162-1-Ig (LCK antibody) at dilution of 1:1000 (under 10x lens. Heat mediated antigen retrieval with Tris-EDTA buffer (pH 9.0).



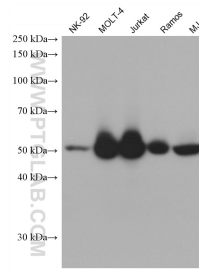
Immunohistochemical analysis of paraffin-embedded human tonsillitis tissue slide using 60162-1-Ig (LCK antibody) at dilution of 1:1000 (under 40x lens. Heat mediated antigen retrieval with Tris-EDTA buffer (pH 9.0).



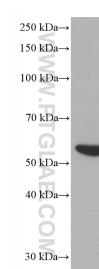
Immunofluorescent analysis of (4% PFA) fixed human tonsillitis tissue using LCK antibody (60162-1-Ig, Clone: 2D10C2) at dilution of 1:400 and CoraLite®488-Conjugated AffiniPure Goat Anti-Mouse IgG(H+L).



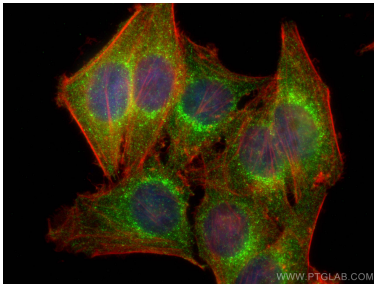
Immunofluorescent analysis of (4% PFA) fixed human tonsillitis tissue using LCK antibody (60162-1-Ig, Clone: 2D10C2) at dilution of 1:400 and CoraLite®488-Conjugated AffiniPure Goat Anti-Mouse IgG(H+L).



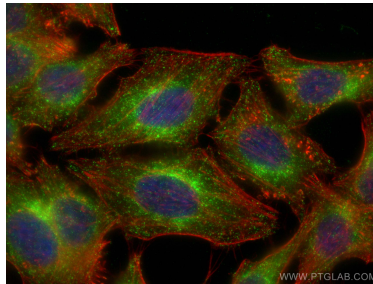
Various lysates were subjected to SDS PAGE followed by western blot with 60162-1-Ig (LCK antibody) at dilution of 1:10000 incubated at room temperature for 1.5 hours.



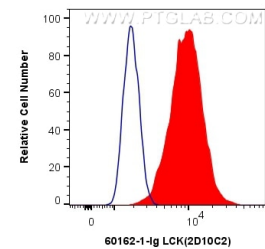
pig thymus tissue were subjected to SDS PAGE followed by western blot with 60162-1-Ig (LCK antibody) at dilution of 1:3000 incubated at room temperature for 1.5 hours.



Immunofluorescent analysis of (4% PFA) fixed HepG2 cells using LCK antibody (60162-1-Ig, Clone: 2D10C2) at dilution of 1:800 and CoraLite®488-Conjugated AffiniPure Goat Anti-Mouse IgG(H+L), CL594-phalloidin (red).



Immunofluorescent analysis of (-20°C Ethanol) fixed HepG2 cells using LCK antibody (60162-1-Ig, Clone: 2D10C2) at dilution of 1:800 and CoraLite®488-Conjugated AffiniPure Goat Anti-Mouse IgG(H+L), CL594-phalloidin (red).



1X10⁶ HepG2 cells were intracellularly stained with 0.4 ug Anti-Human LCK (60162-1-Ig, Clone: 2D10C2) and CoraLite®488-Conjugated AffiniPure Goat Anti-Mouse IgG(H+L) at dilution 1:1000 (red), or 0.4 ug Control Antibody. Cells were fixed with 4% PFA and permeabilized with Flow Cytometry Perm Buffer (PF00011-C).