

For Research Use Only

Synaptophysin Monoclonal antibody



Catalog Number: 60191-1-Ig **8 Publications**

Basic Information

Catalog Number: 60191-1-Ig	GenBank Accession Number: BC064550	Purification Method: Protein A purification
Size: 150ul , Concentration: 1000 µg/ml by Bradford method using BSA as the standard;	GeneID (NCBI): 6855	CloneNo.: 5B3F2
Source: Mouse	Full Name: synaptophysin	Recommended Dilutions: WB 1:500-1:2000 IHC 1:50-1:500 IF 1:10-1:100
Isotype: IgG3	Calculated MW: 313 aa, 34 kDa	
Immunogen Catalog Number: AG11803	Observed MW: 38 kDa	

Applications

Tested Applications: IF, IHC, WB, ELISA	Positive Controls: WB : fetal human brain tissue, human brain tissue, pig brain tissue, SH-SY5Y cells IHC : human brain tissue, IF : PC-12 cells,
Cited Applications: IF, IHC, WB	
Species Specificity: human, mouse, rat, pig	
Cited Species: human, mouse	
Note-IHC: suggested antigen retrieval with TE buffer pH 9.0; (*) Alternatively, antigen retrieval may be performed with citrate buffer pH 6.0	

Background Information

Synaptophysin (SYP, also known as major synaptic vesicle protein p38) is a 38-kDa integral membrane glycoprotein that regulates synaptic vesicle endocytosis. It is the most abundant synaptic vesicle protein by mass. Synaptophysin is present in neuroendocrine cells and neurons that participate in synaptic transmission. Synaptophysin is a useful marker for identification of neuroendocrine cells and neoplasms. (PMID: 3010302; 21658579)

Notable Publications

Author	Pubmed ID	Journal	Application
Danqing Xin	29751053	Brain Behav Immun	WB, IF
Dexiang Liu	32194421	Front Pharmacol	IHC
Jialong Chen	29899409	Cell Death Dis	WB, IF

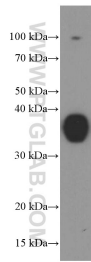
Storage

Storage:
Store at -20°C. Stable for one year after shipment.
Storage Buffer:
PBS with 0.02% sodium azide and 50% glycerol pH 7.3.
Aliquoting is unnecessary for -20°C storage

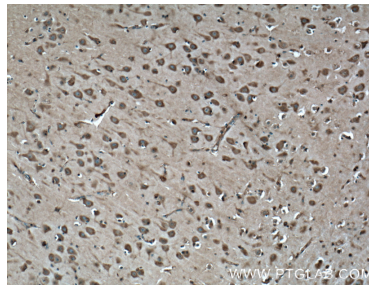
For technical support and original validation data for this product please contact:
T: 1 (888) 4PTGLAB (1-888-478-4522) (toll free in USA), or 1(312) 455-8498 (outside USA)
E: proteintech@ptglab.com
W: ptglab.com

This product is exclusively available under Proteintech Group brand and is not available to purchase from any other manufacturer.

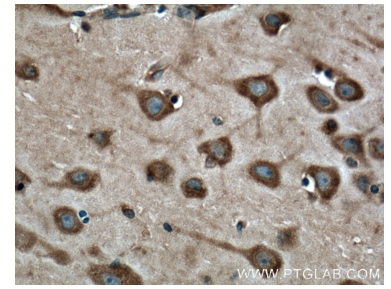
Selected Validation Data



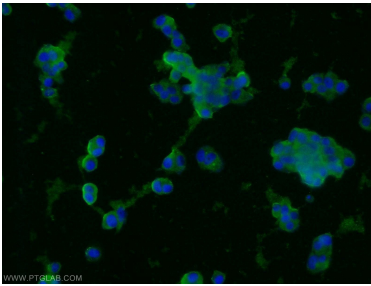
fetal human brain tissue were subjected to SDS PAGE followed by western blot with 60191-1-Ig (Synaptophysin antibody at dilution of 1:1000 incubated at room temperature for 1.5 hours.



Immunohistochemical analysis of paraffin-embedded human brain tissue slide using 60191-1-Ig (Synaptophysin antibody at dilution of 1:200 (under 10x lens). Heat mediated antigen retrieval with Tris-EDTA buffer (pH 9.0).



Immunohistochemical analysis of paraffin-embedded human brain tissue slide using 60191-1-Ig (Synaptophysin antibody at dilution of 1:200 (under 40x lens). Heat mediated antigen retrieval with Tris-EDTA buffer (pH 9.0).



Immunofluorescent analysis of PC-12 cells using 60191-1-Ig (Synaptophysin antibody) at dilution of 1:25 and Alexa Fluor 488-conjugated AffiniPure Goat Anti-Mouse IgG (H+L).