

For Research Use Only

ESR2 Monoclonal antibody

Catalog Number: 60197-1-Ig

Featured Product

12 Publications



Basic Information

Catalog Number: 60197-1-Ig	GenBank Accession Number: BC024181	Purification Method: Protein G purification
Size: 150ul , Concentration: 1300 ug/ml by 2100 Nanodrop and 1000 ug/ml by Bradford method using BSA as the standard;	GeneID (NCBI): 2100	CloneNo.: 5D2C9
Source: Mouse	UNIPROT ID: Q92731	Recommended Dilutions: WB 1:1000-1:4000
Isotype: IgG1	Full Name: estrogen receptor 2 (ER beta)	
Immunogen Catalog Number: AG5103	Calculated MW: 59 kDa	
	Observed MW: 50-60 kDa	

Applications

Tested Applications: WB, ELISA	Positive Controls: WB : MCF-7 cells, human brain tissue, SW 1990 cells
Cited Applications: WB, IHC, IF	
Species Specificity: human	
Cited Species: human, mouse	

Background Information

Estrogen receptor-beta (ESR2) is a member of the superfamily of nuclear receptors, which can transduce extracellular signals into transcriptional responses. It binds estrogens with an affinity similar to that of ESR1, and activates expression of reporter genes containing estrogen response elements (ERE) in an estrogen-dependent manner. DNA-binding by ESR1 and ESR2 is rapidly lost at 37 degrees Celsius in the absence of ligand while in the presence of 17 beta-estradiol and 4-hydroxy-tamoxifen loss in DNA-binding at elevated temperature is more gradual. ESR2 exists various isoform and range of calculated molecular weight of isoforms is 50-60 kDa. The experiment detected two bands for ESR2 in isolated human germ cells, one at 60 kDa and a weaker one at 50 kDa (PMID: 14766008).

Notable Publications

Author	Pubmed ID	Journal	Application
Chenglin Yang	36257561	Environ Pollut	WB
Qi Su	34792729	Mol Biol Rep	WB,IF
Chun Pan	36522098	J Environ Sci (China)	IHC

Storage

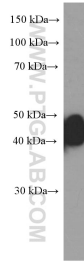
Storage:
Store at -20°C. Stable for one year after shipment.
Storage Buffer:
PBS with 0.02% sodium azide and 50% glycerol pH 7.3.
Aliquoting is unnecessary for -20°C storage

*** 20ul sizes contain 0.1% BSA

For technical support and original validation data for this product please contact:
T: 1 (888) 4PTGLAB (1-888-478-4522) (toll free in USA), or 1(312) 455-8498 (outside USA)
E: proteintech@ptglab.com
W: ptglab.com

This product is exclusively available under Proteintech Group brand and is not available to purchase from any other manufacturer.

Selected Validation Data



MCF-7 cells were subjected to SDS PAGE followed by western blot with 60197-1-Ig (ESR2 Antibody) at dilution of 1:2000 incubated at room temperature for 1.5 hours.