

For Research Use Only

# transgelin/SM22 Monoclonal antibody

Catalog Number: 60213-1-Ig **19 Publications**



## Basic Information

<b>Catalog Number:</b> 60213-1-Ig	<b>GenBank Accession Number:</b> BC004927	<b>Purification Method:</b> Protein G purification
<b>Size:</b> 150ul , Concentration: 700 ug/ml by Bradford method using BSA as the standard;	<b>GeneID (NCBI):</b> 6876	<b>CloneNo.:</b> 2A10C2
<b>Source:</b> Mouse	<b>UNIPROT ID:</b> Q01995	<b>Recommended Dilutions:</b> WB 1:5000-1:50000 IHC 1:50-1:400 IF-P 1:500-1:2000
<b>Isotype:</b> IgG1	<b>Full Name:</b> transgelin	
<b>Immunogen Catalog Number:</b> AG0764	<b>Calculated MW:</b> 22 kDa	
	<b>Observed MW:</b> 18+22 kDa	

## Applications

<b>Tested Applications:</b> WB, IHC, IF-P, ELISA	<b>Positive Controls:</b>
<b>Cited Applications:</b> WB, IF	<b>WB :</b> pig colon tissue, human colon tissue, pig stomach tissue, human stomach tissue, rat colon tissue, rat stomach tissue, rabbit stomach tissue, mouse colon tissue
<b>Species Specificity:</b> human, mouse, rat, pig	<b>IHC :</b> human colon tissue, human heart tissue
<b>Cited Species:</b> human, mouse, rat	<b>IF-P :</b> mouse heart tissue,
<b>Note-IHC: suggested antigen retrieval with TE buffer pH 9.0; (*) Alternatively, antigen retrieval may be performed with citrate buffer pH 6.0</b>	

## Background Information

The transgelin family is a group of proteins that belong to 22 kDa actin-related corpnin superfamily. Of all three isoforms, transgelin 1 is the best characterized. Transgelin 1, also known as SM22 alpha, is a specific marker for differentiated smooth muscle cells. Transgelin 2, also known as SM22 beta, is expressed by both smooth muscle and non-smooth muscle cells in a temporally and spatially regulated pattern. Transgelin 3, also known as NP25, is only found in highly differentiated neuronal cells.

## Notable Publications

Author	Pubmed ID	Journal	Application
Ji-Ting Liu	34604241	Front Cell Dev Biol	WB
Sarah Lang	29152087	Oncotarget	WB
Lin Liu	36309970	Clin Exp Pharmacol Physiol	WB

## Storage

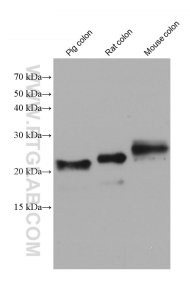
**Storage:**  
Store at -20°C. Stable for one year after shipment.  
**Storage Buffer:**  
PBS with 0.02% sodium azide and 50% glycerol, pH7.3  
Aliquoting is unnecessary for -20°C storage

\*\*\* 20ul sizes contain 0.1% BSA

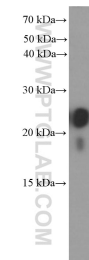
For technical support and original validation data for this product please contact:  
T: 1 (888) 4PTGLAB (1-888-478-4522) (toll free in USA), or 1(312) 455-8498 (outside USA)  
E: proteintech@ptglab.com  
W: ptglab.com

This product is exclusively available under Proteintech Group brand and is not available to purchase from any other manufacturer.

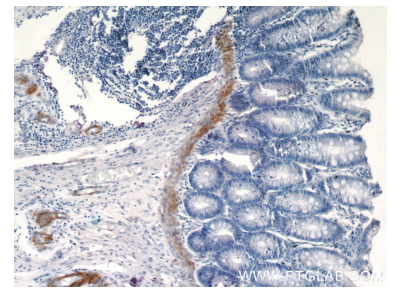
## Selected Validation Data



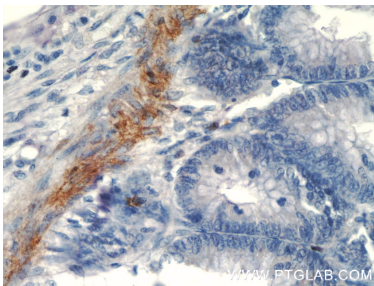
Various lysates were subjected to SDS PAGE followed by western blot with 60213-1-Ig (transgelin/SM22 antibody) at dilution of 1:20000 incubated at room temperature for 1.5 hours.



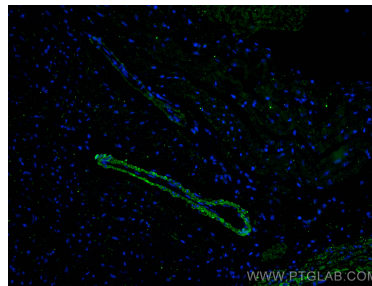
human colon tissue were subjected to SDS PAGE followed by western blot with 60213-1-Ig (transgelin/SM22 antibody at dilution of 1:4000 incubated at room temperature for 1.5 hours.



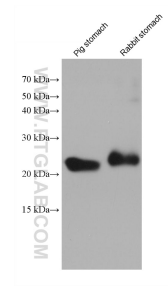
Immunohistochemical analysis of paraffin-embedded human colon tissue slide using 60213-1-Ig (transgelin/SM22 antibody at dilution of 1:200 (under 10x lens).



Immunohistochemical analysis of paraffin-embedded human colon tissue slide using 60213-1-Ig (transgelin/SM22 antibody at dilution of 1:200 (under 40x lens).



Immunofluorescent analysis of (4% PFA) fixed paraffin-embedded mouse heart tissue using transgelin/SM22 antibody (60213-1-Ig, Clone: 2A10C2 ) at dilution of 1:1000 and CoraLite®488-Conjugated AffiniPure Goat Anti-Mouse IgG(H+L). Heat mediated antigen retrieval with Tris-EDTA buffer (pH 9.0).



Various lysates were subjected to SDS PAGE followed by western blot with 60213-1-Ig (transgelin/SM22 antibody) at dilution of 1:20000 incubated at room temperature for 1.5 hours.