

For Research Use Only

# Galectin-1 Monoclonal antibody

Catalog Number: 60223-1-Ig

Featured Product

6 Publications



## Basic Information

Catalog Number:

60223-1-Ig

Size:

150ul, Concentration: 1900 ug/ml by Nanodrop and 1500 ug/ml by Bradford method using BSA as the standard;

Source:

Mouse

Isotype:

IgG1

Immunogen Catalog Number:

AG2432

GenBank Accession Number:

BC020675

GeneID (NCBI):

3956

UNIPROT ID:

P09382

Full Name:

lectin, galactoside-binding, soluble, 1

Calculated MW:

15 kDa

Observed MW:

13 kDa

Purification Method:

Protein G purification

CloneNo.:

3G10D2

Recommended Dilutions:

WB 1:5000-1:50000

IHC 1:2000-1:8000

IF-P 1:2000-1:8000

IF/ICC 1:400-1:1600

## Applications

Tested Applications:

WB, IHC, IF/ICC, IF-P, ELISA

Cited Applications:

WB, IF

Species Specificity:

human

Cited Species:

human

**Note-IHC: suggested antigen retrieval with TE buffer pH 9.0; (\*) Alternatively, antigen retrieval may be performed with citrate buffer pH 6.0**

Positive Controls:

**WB**: HCT 116 cells, human placenta tissue, human heart tissue, HepG2 cells, U2OS cells, A549 cells, HeLa cells, L02 cells

**IHC**: human colon cancer tissue, human pancreas cancer tissue

**IF-P**: human colon cancer tissue,

**IF/ICC**: U2OS cells, Saos-2 cells, human colon cancer tissue

## Background Information

Galectins are a family of animal lectins defined by shared characteristic amino-acid sequences and affinity for  $\beta$ -galactose-containing oligosaccharides (PMID: 8063692). Galectin-1 contains one carbohydrate recognition domain (CRD) and occurs as a monomer as well as a non-covalent homodimer (PMID: 16840800). It is differentially expressed by various normal and pathological tissues. Galectin-1 is a multifunctional protein that is involved in cell adhesion, migration, proliferation, apoptosis, inflammation, tumour transformation and growth (PMID:15785741).

## Notable Publications

Author	Pubmed ID	Journal	Application
Qi Zhang	36177897	Int J Oncol	IF
Marilyne Labrie	29038585	Sci Rep	IF
Maria Claudia Vladoiu	26543238	Oncotarget	WB

## Storage

Storage:

Store at -20°C. Stable for one year after shipment.

Storage Buffer:

PBS with 0.02% sodium azide and 50% glycerol, pH7.3

Aliquoting is unnecessary for -20°C storage

\*\*\* 20ul sizes contain 0.1% BSA

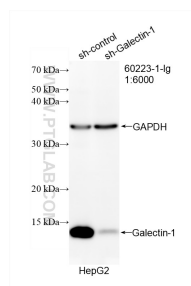
For technical support and original validation data for this product please contact:

T: 1 (888) 4PTGLAB (1-888-478-4522) (toll free in USA), or 1(312) 455-8498 (outside USA)

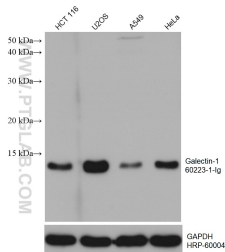
E: [proteintech@ptglab.com](mailto:proteintech@ptglab.com)  
W: [ptglab.com](http://ptglab.com)

This product is exclusively available under Proteintech Group brand and is not available to purchase from any other manufacturer.

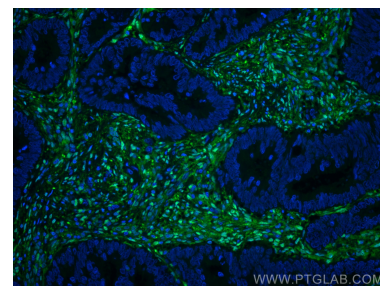
## Selected Validation Data



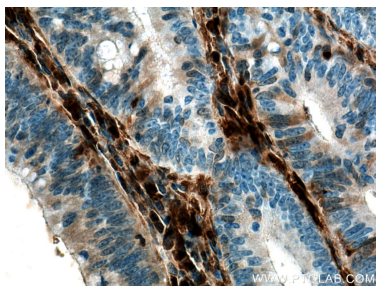
WB result of Galectin-1 antibody (60223-1-Ig; 1:6000; incubated at room temperature for 1.5 hours) with sh-Control and sh-Galectin-1 transfected HepG2 cells.



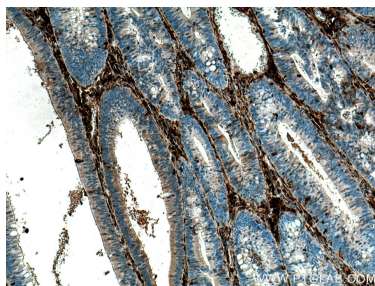
Various lysates were subjected to SDS PAGE followed by western blot with 60223-1-Ig (Galectin-1 antibody) at dilution of 1:15000 incubated at room temperature for 1.5 hours. The membrane was stripped and reblotted with HRP-conjugated GAPDH Monoclonal antibody (HRP-60004) as loading control.



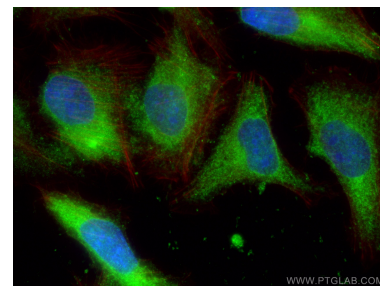
Immunofluorescent analysis of (4% PFA) fixed human colon cancer tissue using Galectin-1 antibody (60223-1-Ig, Clone: 3G10D2) at dilution of 1:4000 and CoraLite®488-Conjugated AffiniPure Goat Anti-Mouse IgG(H+L).



Immunohistochemical analysis of paraffin-embedded human colon cancer tissue slide using 60223-1-Ig (Galectin-1 antibody) at dilution of 1:4000 (under 40x lens). Heat mediated antigen retrieval with Tris-EDTA buffer (pH 9.0).



Immunohistochemical analysis of paraffin-embedded human colon cancer tissue slide using 60223-1-Ig (Galectin-1 antibody) at dilution of 1:4000 (under 10x lens). Heat mediated antigen retrieval with Tris-EDTA buffer (pH 9.0).



Immunofluorescent analysis of (-20°C Ethanol) fixed U2OS cells using Galectin-1 antibody (60223-1-Ig, Clone: 3G10D2) at dilution of 1:800 and CoraLite®488-Conjugated AffiniPure Goat Anti-Mouse IgG(H+L), CL594-Phalloidin (red).