

For Research Use Only

# Desmin Monoclonal antibody

Catalog Number: 60226-1-Ig **5 Publications**



## Basic Information

<b>Catalog Number:</b> 60226-1-Ig	<b>GenBank Accession Number:</b> BC032116	<b>Purification Method:</b> Protein A purification
<b>Size:</b> 150UL, Concentration: 1200 µg/ml by Bradford method using BSA as the standard;	<b>GeneID (NCBI):</b> 1674	<b>CloneNo.:</b> 3E12C8
<b>Source:</b> Mouse	<b>Full Name:</b> desmin	<b>Recommended Dilutions:</b> WB 1:500-1:2000
<b>Isotype:</b> IgG2a	<b>Calculated MW:</b> 470 aa, 54 kDa	
<b>Immunogen Catalog Number:</b> AG9675	<b>Observed MW:</b> 55 kDa	

## Applications

<b>Tested Applications:</b> WB, ELISA	<b>Positive Controls:</b> WB: Human heart, human testis tissue, human heart tissue
<b>Cited Applications:</b> IF, WB	
<b>Species Specificity:</b> human	
<b>Cited Species:</b> human, mouse, rat	

## Background Information

Desmin is the main intermediate filament protein in skeletal and cardiac muscle cells and is essential for both the structural integrity and the survival of muscle cells. As an abundant muscle-specific protein, desmin has been widely used as a marker of muscle derived tumors. Anti-desmin is also valuable in the differential diagnosis of tumors of uncertain origin.

## Notable Publications

Author	Pubmed ID	Journal	Application
Qian Feng	27986413	Reprod Biomed Online	IF
Pan Gao	25017793	Biochim Biophys Acta	WB
Zhenzhong Zheng	30098304	Diabetes Metab Res Rev	IF

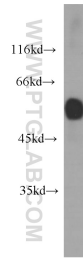
## Storage

**Storage:**  
Store at -20°C. Stable for one year after shipment.  
**Storage Buffer:**  
PBS with 0.02% sodium azide and 50% glycerol pH 7.3.  
Aliquoting is unnecessary for -20°C storage

For technical support and original validation data for this product please contact:  
T: 1 (888) 4PTGLAB (1-888-478-4522) (toll free in USA), or 1(312) 455-8498 (outside USA)  
E: proteintech@ptglab.com  
W: ptglab.com

**This product is exclusively available under Proteintech Group brand and is not available to purchase from any other manufacturer.**

## Selected Validation Data



human heart tissue were subjected to SDS PAGE followed by western blot with 60226-1-Ig (DES antibody) at dilution of 1:1000 incubated at room temperature for 1.5 hours.