

For Research Use Only

# Cytoglobin Monoclonal antibody



Catalog Number: 60228-1-Ig **1 Publications**

## Basic Information

<b>Catalog Number:</b> 60228-1-Ig	<b>GenBank Accession Number:</b> BC029798	<b>Purification Method:</b> Protein G purification
<b>Size:</b> 150ul , Concentration: 1000 µg/ml by Bradford method using BSA as the standard;	<b>GeneID (NCBI):</b> 114757	<b>CloneNo.:</b> 4C7E11
<b>Source:</b> Mouse	<b>Full Name:</b> cytoglobin	<b>Recommended Dilutions:</b> WB 1:500-1:2000 IHC 1:20-1:200 IF 1:50-1:500
<b>Isotype:</b> IgG1	<b>Calculated MW:</b> 190 aa, 21 kDa	
<b>Immunogen Catalog Number:</b> AG4161	<b>Observed MW:</b> 27-29 kDa	

## Applications

<b>Tested Applications:</b> IF, IHC, WB, ELISA	<b>Positive Controls:</b> WB : Human heart, tissue
<b>Cited Applications:</b> WB	<b>IHC :</b> human liver tissue, human bladder tissue, human heart tissue
<b>Species Specificity:</b> human, mouse, pig, rat	<b>IF :</b> HeLa cells,
<b>Cited Species:</b> human	
<b>Note-IHC: suggested antigen retrieval with TE buffer pH 9.0; (*) Alternatively, antigen retrieval may be performed with citrate buffer pH 6.0</b>	

## Background Information

Cytoglobin is a ubiquitously expressed hexacoordinate hemoglobin that may facilitate diffusion of oxygen through tissues. The protein, with calculated MW of 21 kDa, runs as a 29 kDa one in canine retina, kidney, liver, lung, and heart. It may be caused by posttranslational modification of the protein. Various immuno-staining patterns were reported including nuclear, cytoplasm and extracellular location.

## Notable Publications

Author	Pubmed ID	Journal	Application
Shazhou Ye	33611811	J Cell Mol Med	WB

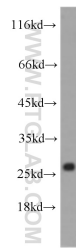
## Storage

**Storage:**  
Store at -20°C. Stable for one year after shipment.  
**Storage Buffer:**  
PBS with 0.02% sodium azide and 50% glycerol pH 7.3.  
Aliquoting is unnecessary for -20°C storage

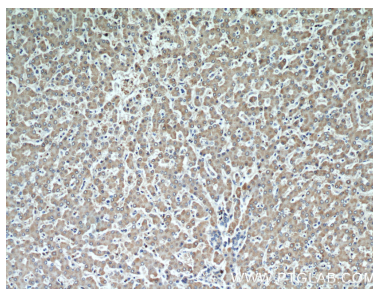
For technical support and original validation data for this product please contact:  
T: 1 (888) 4PTGLAB (1-888-478-4522) (toll free in USA), or 1(312) 455-8498 (outside USA)  
E: proteintech@ptglab.com  
W: ptglab.com

**This product is exclusively available under Proteintech Group brand and is not available to purchase from any other manufacturer.**

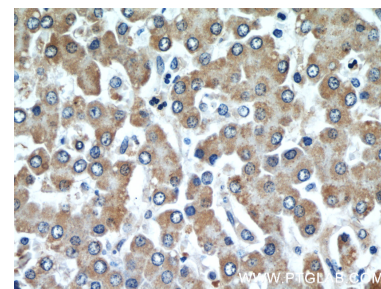
## Selected Validation Data



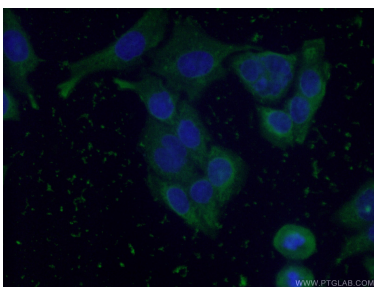
human heart tissue were subjected to SDS PAGE followed by western blot with 60228-1-Ig (Cytoglobin antibody) at dilution of 1:1000 incubated at room temperature for 1.5 hours.



Immunohistochemical analysis of paraffin-embedded human liver using 60228-1-Ig (Cytoglobin antibody) at dilution of 1:50 (under 10x lens).



Immunohistochemical analysis of paraffin-embedded human liver using 60228-1-Ig (Cytoglobin antibody) at dilution of 1:50 (under 40x lens).



Immunofluorescent analysis of (-20°C Ethanol) fixed HeLa cells using 60228-1-Ig (Cytoglobin antibody) at dilution of 1:50 and Alexa Fluor 488-conjugated AffiniPure Goat Anti-Mouse IgG(H+L).