

4EBP1

Monoclonal ANTIBODY

Catalog Number: 60246-1-Ig

Featured Product

10 Publications

Basic Information

Catalog Number:
60246-1-Ig

Size:
240 µg/150 µl

Source:
Mouse

Isotype:
IgG2b

Purification Method:
Protein A purification

Immunogen Catalog Number:
AG18985

GenBank Accession Number:
BC004459

GeneID (NCBI):
1978

Full Name:
eukaryotic translation initiation factor 4E
binding protein 1

Calculated MW:
118aa, 12 kDa

Observed MW:
15-24 kDa

Recommended Dilutions:
WB 1:1000-1:4000
IF 1:20-1:200

Applications

Tested Applications:
IF, WB, ELISA

Cited Applications:
WB

Species Specificity:
human

Cited Species:
human

Positive Controls:

WB : K-562 cells; K562 , RAW 264.7 cells

IF : HeLa cells;

Background Information

Eukaryotic translation initiation factor 4E-binding protein 1(4EBP1), is a member of 4EBPs family, which regulate the translation of a subset of mRNA by competing with eIF4G for binding to eIF4E, thus preventing the assembly of the eIF4F complex. The eIF4F facilitates the recruitment of other translation initiation factors to form the complex and then initiates cap-dependent translation. 4EBP1 also mediates the regulation of protein translation by growth factors, hormones and other stimuli that signal through the MAP kinase and mTORC1 pathways. There are three forms of 4EBP1, alpha, beta and gamma. typical pattern seen on Western blots for phosphorylated heat-acid stabled protein 4EBP1 from rat gastrocnemius muscle. Three distinct bands are noted, with the most rapidly migrating band having an apparent molecular mass of ; 20 kDa and the slowest migrating band of ; 24 kDa. The 3 bands are designated by convention as alpha, beta and gamma. (PMD: 10913029)

Notable Publications

Author	Pubmed ID	Journal	Application
Hai-Feng Wang	30218751	Gene	WB
Tingting Huang	30355943	Cell Physiol Biochem	WB
Rui Huang	29192326	Oncol Rep	WB

Storage

Storage:

Store at -20°C. Stable for one year after shipment.

Storage Buffer:

PBS with 0.02% sodium azide and 50% glycerol pH 7.3.

Aliquoting is unnecessary for -20°C storage

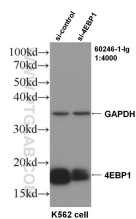
For technical support and original validation data for this product please contact:

T: 1 (888) 4PTGLAB (1-888-478-4522) (toll free in USA), or 1(312) 455-8498 (outside USA)

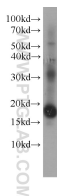
E: proteintech@ptglab.com
W: ptglab.com

This product is exclusively available under Proteintech Group brand and is not available to purchase from any other manufacturer.

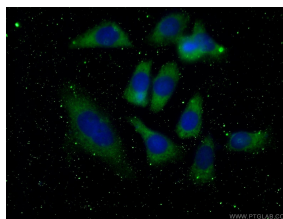
Selected Validation Data



WB result of 4EBP1 antibody (60246-1-Ig, 1:4000) with si-Control and si-4EBP1 transfected K562 cells.



K-562 cells were subjected to SDS PAGE followed by western blot with 60246-1-Ig(4EBP1 antibody) at dilution of 1:2000 incubated at room temperature for 1.5 hours



Immunofluorescent analysis of (-20) Ethanol fixed HeLa cells using 60246-1-Ig(4EBP1 antibody) at dilution of 1:100 and Alexa Fluor 488-conjugated AffiniPure Goat Anti-Mouse IgG(H+L)