

For Research Use Only

CRYBB1 Monoclonal ANTIBODY



Catalog Number: 60273-1-Ig

Basic Information

Catalog Number:

60273-1-Ig

Size:

150UL, Concentration: 580 µg/ml by Bradford method using BSA as the standard;

Source:

Mouse

Isotype:

IgG1

Immunogen Catalog Number:

AG4722

GenBank Accession Number:

BC036790

GeneID (NCBI):

1414

Full Name:

crystallin, beta B1

Calculated MW:

252 aa, 28 kDa

Observed MW:

30 kDa

Purification Method:

Protein G purification

CloneNo.:

6F12B12

Recommended Dilutions:

WB 1:500-1:2000

Applications

Tested Applications:

WB, ELISA

Species Specificity:

human, mouse, rat

Positive Controls:

WB: C6 cells, mouse eye tissue

Background Information

Mutation in CRYBB1 is associated with congenital Cataract-Microcornea Syndrome.

Storage

Storage:

Store at -20°C. Stable for one year after shipment.

Storage Buffer:

PBS with 0.02% sodium azide and 50% glycerol pH 7.3.

Aliquoting is unnecessary for -20°C storage

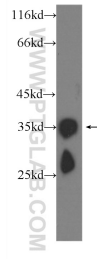
For technical support and original validation data for this product please contact:

T: 1 (888) 4PTGLAB (1-888-478-4522) (toll free in USA), or 1(312) 455-8498 (outside USA)

E: proteintech@ptglab.com
W: ptglab.com

This product is exclusively available under Proteintech Group brand and is not available to purchase from any other manufacturer.

Selected Validation Data



C6 cells were subjected to SDS PAGE followed by western blot with 60273-1-Ig (CRYBB1 Antibody) at dilution of 1:1000 incubated at room temperature for 1.5 hours.