

For Research Use Only

# Chk1 Monoclonal antibody

Catalog Number: 60277-1-Ig **2 Publications**



## Basic Information

<b>Catalog Number:</b> 60277-1-Ig	<b>GenBank Accession Number:</b> BC004202	<b>Purification Method:</b> Protein A purification
<b>Size:</b> 150ul , Concentration: 1200 µg/ml by Bradford method using BSA as the standard;	<b>GeneID (NCBI):</b> 1111	<b>CloneNo.:</b> 3A3A5
<b>Source:</b> Mouse	<b>Full Name:</b> CHK1 checkpoint homolog (S. pombe)	<b>Recommended Dilutions:</b> WB 1:1000-1:3000 IHC 1:20-1:200
<b>Isotype:</b> IgG2b	<b>Calculated MW:</b> 54 kDa	
<b>Immunogen Catalog Number:</b> AG0409	<b>Observed MW:</b> 40 kDa, 50 kDa	

## Applications

<b>Tested Applications:</b> IHC, WB, ELISA	<b>Positive Controls:</b> WB : HeLa cells, NIH/3T3 cells, HEK-293 cells, Jurkat cells, K-562 cells IHC : human small intestine tissue, human testis tissue
<b>Cited Applications:</b> WB	
<b>Species Specificity:</b> human, mouse, rat	
<b>Cited Species:</b> human, mouse	
<b>Note-IHC: suggested antigen retrieval with TE buffer pH 9.0; (*) Alternatively, antigen retrieval may be performed with citrate buffer pH 6.0</b>	

## Background Information

CHEK1(Checkpoint kinase-1) is also named as CHK1 and belongs to the protein kinase superfamily. It is implicated in a circuit in which it activates checkpoints, DNA repair and proliferating cell nuclear antigen and FANCD2 monoubiquitylation(PMID:21389083). CHEK1 protects vertebrate cells against spontaneous chromosome missegregation and is required to sustain anaphase delay when spindle function is disrupted by taxol(PMID:17276342). It has 3 isoforms produced by alternative splicing with the molecular mass of 54 kDa, 44 kDa and 50 kDa.

## Notable Publications

Author	Pubmed ID	Journal	Application
Ping Li	34285189	Cell Death Discov	WB
Xinxin Zuo	33398173	Nat Struct Mol Biol	WB

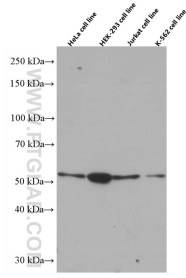
## Storage

**Storage:**  
Store at -20°C. Stable for one year after shipment.  
**Storage Buffer:**  
PBS with 0.02% sodium azide and 50% glycerol pH 7.3.  
Aliquoting is unnecessary for -20°C storage

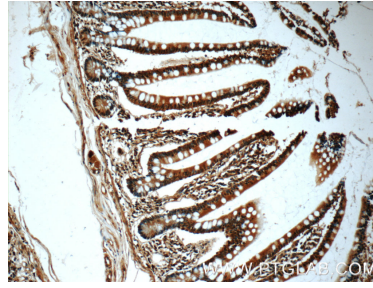
For technical support and original validation data for this product please contact:  
T: 1 (888) 4PTGLAB (1-888-478-4522) (toll free in USA), or 1(312) 455-8498 (outside USA)  
E: proteintech@ptglab.com  
W: ptglab.com

**This product is exclusively available under Proteintech Group brand and is not available to purchase from any other manufacturer.**

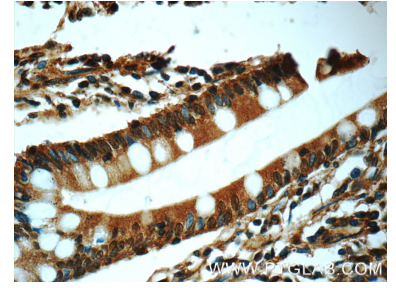
## Selected Validation Data



Various lysates were subjected to SDS PAGE followed by western blot with 60277-1-Ig (Chk1 antibody) at dilution of 1:3000 incubated at room temperature for 1.5 hours.



Immunohistochemical analysis of paraffin-embedded human small intestine tissue slide using 60277-1-Ig (CHK1 Antibody) at dilution of 1:50 (under 10x lens).



Immunohistochemical analysis of paraffin-embedded human small intestine tissue slide using 60277-1-Ig (CHK1 Antibody) at dilution of 1:50 (under 40x lens).