

For Research Use Only

OPTN/Optineurin Monoclonal antibody

Catalog Number: 60293-1-Ig

Featured Product

2 Publications



Basic Information

Catalog Number:

60293-1-Ig

Size:

150ul, Concentration: 2000 ug/ml by Nanodrop;

Source:

Mouse

Isotype:

IgG1

Immunogen Catalog Number:

AG1272

GenBank Accession Number:

BC013876

GeneID (NCBI):

10133

UNIPROT ID:

Q96CV9

Full Name:

optineurin

Calculated MW:

66 kDa

Observed MW:

70-74 kDa

Purification Method:

Protein G purification

CloneNo.:

6C1H4

Recommended Dilutions:

WB 1:5000-1:50000

IHC 1:50-1:500

IF/ICC 1:400-1:1600

Applications

Tested Applications:

WB, IHC, IF/ICC, ELISA

Cited Applications:

WB, IF

Species Specificity:

human, pig

Cited Species:

human

Note-IHC: suggested antigen retrieval with TE buffer pH 9.0; (*) Alternatively, antigen retrieval may be performed with citrate buffer pH 6.0

Positive Controls:

WB : A549 cells, HeLa cells, HEK-293 cells, pig skeletal muscle tissue

IHC : human pancreas cancer tissue, human brain tissue

IF/ICC : MCF-7 cells,

Background Information

OPTN, also named as FIP2, GLC1E, HIP7, HYPL and NRP, plays a neuroprotective role in the eye and optic nerve. It is probably part of the TNF-alpha signaling pathway that can shift the equilibrium toward induction of cell death. OPTN may act by regulating membrane trafficking and cellular morphogenesis via a complex that contains Rab8 and huntingtin (HD). OPTN may constitute a cellular target for adenovirus E3 14.7, an inhibitor of TNF-alpha functions, thereby affecting cell death. Defects in OPTN are a cause of susceptibility to normal pressure glaucoma (NPG). OPTN mutated in adult-onset primary open angle glaucoma. It supports the protective role of OPTN in the trabecular meshwork.

Notable Publications

Author	Pubmed ID	Journal	Application
Deguan Lv	35659339	Dev Cell	WB,IF
Qian Xue	36622894	Autophagy	WB

Storage

Storage:

Store at -20°C. Stable for one year after shipment.

Storage Buffer:

PBS with 0.02% sodium azide and 50% glycerol, pH7.3

Aliquoting is unnecessary for -20°C storage

*** 20ul sizes contain 0.1% BSA

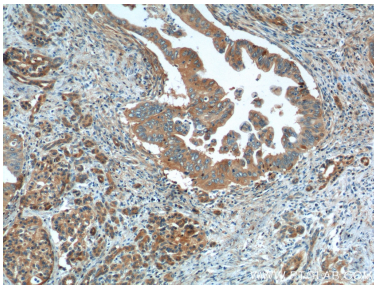
For technical support and original validation data for this product please contact:

T: 1 (888) 4PTGLAB (1-888-478-4522) (toll free in USA), or 1(312) 455-8498 (outside USA)

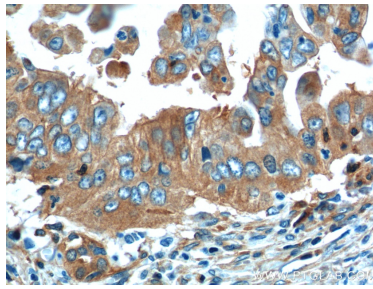
E: proteintech@ptglab.com
W: ptglab.com

This product is exclusively available under Proteintech Group brand and is not available to purchase from any other manufacturer.

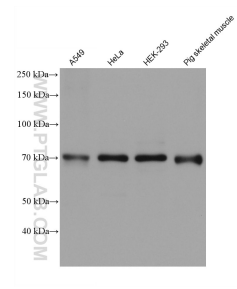
Selected Validation Data



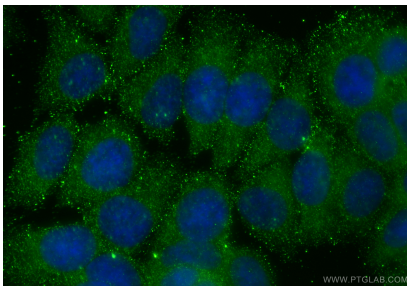
Immunohistochemical analysis of paraffin-embedded human pancreas cancer tissue slide using 60293-1-Ig (OPTN Antibody) at dilution of 1:200 (under 10x lens).



Immunohistochemical analysis of paraffin-embedded human pancreas cancer tissue slide using 60293-1-Ig (OPTN Antibody) at dilution of 1:200 (under 40x lens).



Various lysates were subjected to SDS PAGE followed by western blot with 60293-1-Ig (OPTN/Optineurin antibody) at dilution of 1:20000 incubated at room temperature for 1.5 hours.



Immunofluorescent analysis of (-20°C Methanol) fixed MCF-7 cells using OPTN antibody (60293-1-Ig, Clone: 6C1H4) at dilution of 1:800 and CoraLite®488-Conjugated Goat Anti-Mouse IgG(H+L) (SA00013-1).