

For Research Use Only

PTEN Monoclonal ANTIBODY



Catalog Number: 60300-1-Ig **12 Publications**

Basic Information

| | | |
|---|---|--|
| Catalog Number: 60300-1-Ig | GenBank Accession Number: BC005821 | Recommended Dilutions: WB 1:1000-1:4000 IHC 1:200-1:1200 IF 1:20-1:200 |
| Size: mg/ml | GeneID (NCBI): 5728 | |
| Source: Mouse | Full Name: phosphatase and tensin homolog | |
| Isotype: IgG2a | Calculated MW: 47 kDa | |
| Purification Method: Protein A purification | Observed MW: 55 kDa | |
| Immunogen Catalog Number: AG17274 | | |

Applications

| | |
|---|--|
| Tested Applications: IF, IHC, WB, ELISA | Positive Controls: WB : fetal human brain tissue; RAW 264.7 cells, DU 145 cells, HeLa cells, HEK-293 cells, MCF-7 cells, HepG2 cells |
| Cited Applications: IF, IHC, WB | IHC : human breast hyperplasia tissue; human breast cancer tissue, human endometrial cancer tissue, human lung cancer tissue, human prostate hyperplasia tissue |
| Species Specificity: human, mouse | IF : HepG2 cells; |
| Cited Species: human, mouse | |

Background Information

PTEN (also designated MMAC1), products of tumor suppressor genes, are found deleted in most human gliomas. The PTEN genes are also mutated in many other tumors, such as brain, breast, kidney and prostate cancers. PTEN is a protein tyrosine phosphatase that may terminate the signaling transduction pathways mediated by PI 3-kinase/Akt. PTEN has an apparent molecular weight of 55 kDa and it is located in the cytosol.

Notable Publications

| Author | Pubmed ID | Journal | Application |
|----------------|-----------|-------------------------|-------------|
| Ying Zhang | 29074436 | Int J Biochem Cell Biol | WB |
| Jiwei Zhang | 28746790 | Hepatology | IHC |
| Bing-Gang Zhou | 29130495 | J Cell Biochem | WB |

Storage

Storage:
Store at -20°C. Stable for one year after shipment.
Storage Buffer:
PBS, pH 7.3.
Aliquoting is unnecessary for -20°C storage

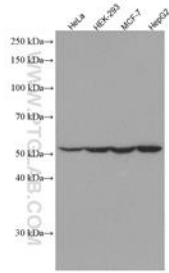
For technical support and original validation data for this product please contact:

T: 1 (888) 4PTGLAB (1-888-478-4522) (toll free in USA), or 1(312) 455-8498 (outside USA)

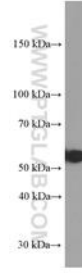
E: proteintech@ptglab.com
W: ptglab.com

This product is exclusively available under Proteintech Group brand and is not available to purchase from any other manufacturer.

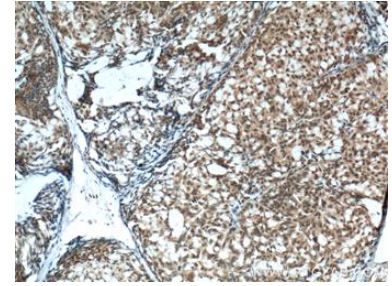
Selected Validation Data



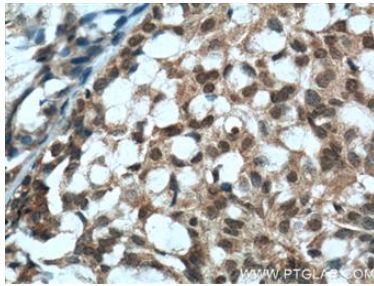
Various lysates were subjected to SDS PAGE followed by western blot with 60300-1-Ig (PTEN antibody) at dilution of 1:1000 incubated at room temperature for 1.5 hours



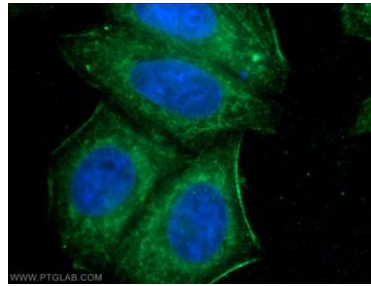
fetal human brain tissue were subjected to SDS PAGE followed by western blot with 60300-1-Ig (PTEN Antibody) at dilution of 1:2000 incubated at room temperature for 1.5 hours



Immunohistochemistry of paraffin-embedded human breast hyperplasia tissue slide using 60300-1-Ig (PTEN antibody) at dilution of 1:600 (under 10x lens) heat mediated antigen retrieved with Tris-EDTA buffer(pH9).



Immunohistochemistry of paraffin-embedded human breast hyperplasia tissue slide using 60300-1-Ig (PTEN antibody) at dilution of 1:600 (under 40x lens) heat mediated antigen retrieved with Tris-EDTA buffer(pH9).



Immunofluorescent analysis of HepG2 cells using 60300-1-Ig(PTEN antibody) at dilution of 1:50 and Alexa Fluor 488-conjugated AffiniPure Goat Anti-Mouse IgG(H+L)