

For Research Use Only

FOLR1 Monoclonal antibody

Catalog Number: 60307-1-Ig

Featured Product

6 Publications



Basic Information

Catalog Number:

60307-1-Ig

GenBank Accession Number:

BC002947

Purification Method:

Protein G purification

Size:

150ul, Concentration: 2057 ug/ml by 2348 Nanodrop and 1000 ug/ml by Bradford method using BSA as the standard;

GeneID (NCBI):

2348

CloneNo.:

2B4B7

Source:

Mouse

UNIPROT ID:

P15328

Recommended Dilutions:

WB: 1:1000-1:8000

IHC: 1:50-1:500

Isotype:

IgG1

Full Name:

folate receptor 1 (adult)

Calculated MW:

257 aa, 30 kDa

Immunogen Catalog Number:

AG19959

Observed MW:

36-38 kDa

Applications

Tested Applications:

WB, IHC, ELISA

Positive Controls:

WB : human milk, HeLa cells

Cited Applications:

WB, IHC

IHC : human kidney tissue,

Species Specificity:

human

Cited Species:

human

Note-IHC: suggested antigen retrieval with TE buffer pH 9.0; (*) Alternatively, antigen retrieval may be performed with citrate buffer pH 6.0

Background Information

Folate receptor 1 (FOLR1), also known as folate receptor alpha or adult folate-binding protein (FBP), is a 38-kDa glycoprotein belonging to the folate receptor family (PMID:15094207; 23528302). The receptor binds to folate and reduced folic acid derivatives and mediates delivery of 5-methyltetrahydrofolate to the interior of cells. FOLR1 is a secreted protein that either anchors to membranes via a glycosyl-phosphatidylinositol linkage or exists in a soluble form. FOLR1 expression is often limited to the apical surfaces of epithelium in the lung, kidney and choroid plexus but is differentially overexpressed in a variety of solid tumors such as ovarian cancer, non-small cell lung cancer, breast cancer, kidney cancer and high-grade osteosarcoma (PMID: 23528302; 23357463).

Notable Publications

Author	Pubmed ID	Journal	Application
Yue Pan	35323454	Biosensors (Basel)	WB
Xiangqin Meng	33705663	ACS Nano	WB
Yuki Matsunaga	33535554	Antibodies (Basel)	WB

Storage

Storage:

Store at -20°C. Stable for one year after shipment.

Storage Buffer:

PBS with 0.02% sodium azide and 50% glycerol, pH7.3

Aliquoting is unnecessary for -20°C storage

*** 20ul sizes contain 0.1% BSA

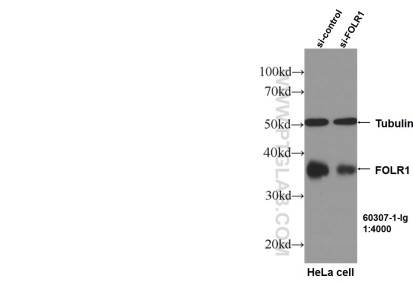
For technical support and original validation data for this product please contact:

T: 1 (888) 4PTGLAB (1-888-478-4522) (toll free in USA), or 1(312) 455-8498 (outside USA)

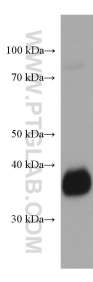
E: proteintech@ptglab.com
W: ptglab.com

This product is exclusively available under Proteintech Group brand and is not available to purchase from any other manufacturer.

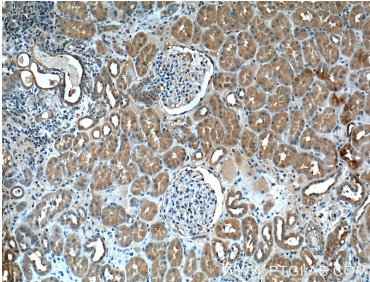
Selected Validation Data



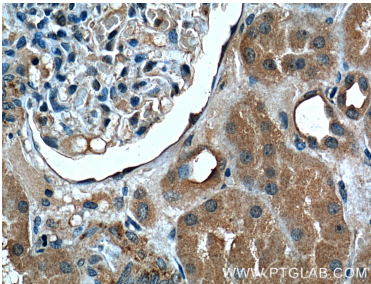
WB result of FOLR1 antibody (60307-1-Ig, 1:4000) with si-Control and si-FOLR1 transfected HeLa cells..



human milk were subjected to SDS PAGE followed by western blot with 60307-1-Ig (FOLR1 antibody) at dilution of 1:4000 incubated at room temperature for 1.5 hours.



Immunohistochemical analysis of paraffin-embedded human kidney tissue slide using 60307-1-Ig (FOLR1 Antibody) at dilution of 1:200 (under 10x lens).



Immunohistochemical analysis of paraffin-embedded human kidney tissue slide using 60307-1-Ig (FOLR1 Antibody) at dilution of 1:200 (under 40x lens).