

For Research Use Only

# c-SRC Monoclonal antibody

Catalog Number: 60315-1-Ig **19 Publications**



## Basic Information

<b>Catalog Number:</b> 60315-1-Ig	<b>GenBank Accession Number:</b> BC011566	<b>Purification Method:</b> Protein A purification
<b>Size:</b> 150ul , Concentration: 1500 ug/ml by Nanodrop;	<b>GeneID (NCBI):</b> 6714	<b>CloneNo.:</b> 5E10C4
<b>Source:</b> Mouse	<b>ENSEMBL Gene ID:</b> ENSG00000197122	<b>Recommended Dilutions:</b> WB: 1:5000-1:50000 IHC: 1:100-1:400 IF/ICC: 1:50-1:500
<b>Isotype:</b> IgG2b	<b>UNIPROT ID:</b> P12931	
<b>Immunogen Catalog Number:</b> AG22306	<b>Full Name:</b> v-src sarcoma (Schmidt-Ruppin A-2) viral oncogene homolog (avian)	
	<b>Calculated MW:</b> 60 kDa	
	<b>Observed MW:</b> 60 kDa	

## Applications

<b>Tested Applications:</b> WB, IHC, IF/ICC, ELISA	<b>Positive Controls:</b> <b>WB :</b> HeLa cells, RAW 264.7 cells, CHO cells, HepG2 cells, HEK-293 cells, Jurkat cells, NIH/3T3 cells, 4T1 cells, PC-12 cells, HSC-T6 cells <b>IHC :</b> human breast cancer tissue, <b>IF/ICC :</b> MCF-7 cells,
<b>Cited Applications:</b> WB, IF	
<b>Species Specificity:</b> human, mouse, rat, hamster	
<b>Cited Species:</b> human, mouse	
<b>Note-IHC: suggested antigen retrieval with TE buffer pH 9.0; (*) Alternatively, antigen retrieval may be performed with citrate buffer pH 6.0</b>	

## Background Information

SRC, also named as SRC1 and p60-Src, belongs to the protein kinase superfamily, Tyr protein kinase family and SRC subfamily. It is a non-receptor protein tyrosine kinase that plays pivotal roles in numerous cellular processes such as proliferation, migration, and transformation. In concert with PTK2B, SRC plays an important role in osteoclastic bone resorption. It promotes energy production in osteoclasts by activating mitochondrial cytochrome C oxidase.

## Notable Publications

Author	Pubmed ID	Journal	Application
Fan Yang	26347956	Nat Commun	WB
Márcia Faria	36358781	Cancers (Basel)	WB
Shiyu Wu	34821070	Adv Sci (Weinh)	IF

## Storage

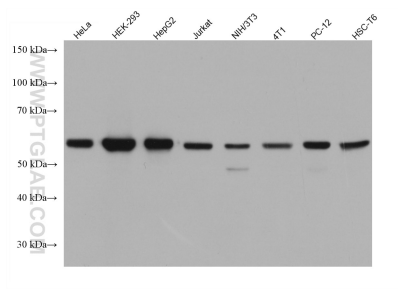
**Storage:**  
Store at -20°C. Stable for one year after shipment.  
**Storage Buffer:**  
PBS with 0.02% sodium azide and 50% glycerol, pH7.3  
Aliquoting is unnecessary for -20°C storage

\*\*\* 20ul sizes contain 0.1% BSA

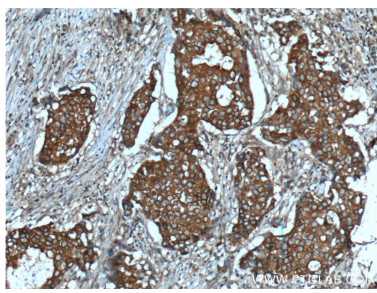
For technical support and original validation data for this product please contact:  
T: 1 (888) 4PTGLAB (1-888-478-4522) (toll free in USA), or 1(312) 455-8498 (outside USA)  
E: proteintech@ptglab.com  
W: ptglab.com

This product is exclusively available under Proteintech Group brand and is not available to purchase from any other manufacturer.

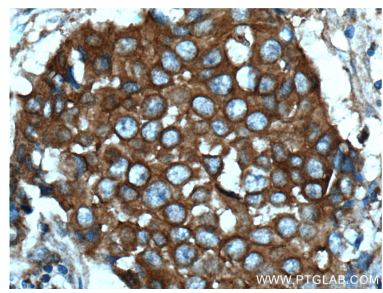
Selected Validation Data



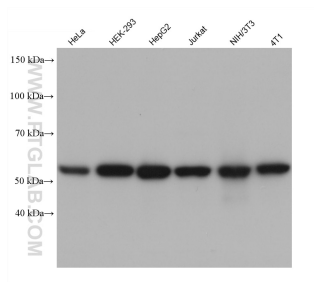
Various lysates were subjected to SDS PAGE followed by western blot with 60315-1-Ig (c-SRC antibody) at dilution of 1:10000 incubated at room temperature for 1.5 hours.



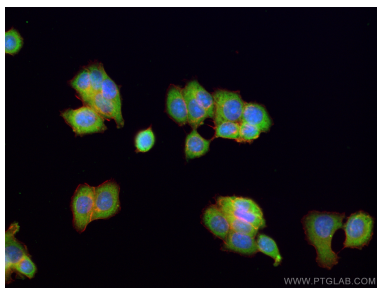
Immunohistochemical analysis of paraffin-embedded human breast cancer tissue slide using 60315-1-Ig (c-SRC Antibody) at dilution of 1:200 (under 10x lens). Heat mediated antigen retrieval with Tris-EDTA buffer (pH 9.0).



Immunohistochemical analysis of paraffin-embedded human breast cancer tissue slide using 60315-1-Ig (c-SRC Antibody) at dilution of 1:200 (under 40x lens). Heat mediated antigen retrieval with Tris-EDTA buffer (pH 9.0).



Various lysates were subjected to SDS PAGE followed by western blot with 60315-1-Ig (c-SRC antibody) at dilution of 1:10000 incubated at room temperature for 1.5 hours.



Immunofluorescent analysis of (-20°C Ethanol) fixed MCF-7 cells using c-SRC antibody (60315-1-Ig, Clone: 5E10C4) at dilution of 1:200 and Coralite® 488-Conjugated AffiniPure Goat Anti-Mouse IgG(H+L).