

For Research Use Only

# VCP Monoclonal antibody

Catalog Number: 60316-1-Ig

Featured Product

1 Publications



## Basic Information

**Catalog Number:**

60316-1-Ig

**Size:**

150UL, Concentration: 667 µg/ml by Bradford method using BSA as the standard;

**Source:**

Mouse

**Isotype:**

IgG1

**Immunogen Catalog Number:**

AG1002

**GenBank Accession Number:**

BC007562

**GeneID (NCBI):**

7415

**Full Name:**

valosin-containing protein

**Calculated MW:**

89 kDa

**Observed MW:**

89 kDa

**Purification Method:**

Protein G purification

**CloneNo.:**

2A4B10

**Recommended Dilutions:**

WB 1:500-1:2000

IHC 1:20-1:200

IF 1:20-1:200

## Applications

**Tested Applications:**

IF, IHC, WB, ELISA

**Cited Applications:**

WB

**Species Specificity:**

human, mouse

**Cited Species:**

human

**Note-IHC: suggested antigen retrieval with TE buffer pH 9.0; (\*) Alternatively, antigen retrieval may be performed with citrate buffer pH 6.0**

**Positive Controls:**

WB : RAW 264.7 cells, HeLa cells, SH-SY5Y cells

IHC : human gliomas tissue,

IF : RAW 264.7 cells, SH-SY5Y cells

## Background Information

VCP (Valosin-containing protein), also known as TER ATPase and 15S Mg<sup>2+</sup>-ATPase p97 subunit, belongs to the AAA ATPase family. VCP was first identified as a result of attempts to clone a putative peptide hormone called valosin. It was found that the cloned cDNA encoded a ubiquitously expressed 90 kDa cytosolic protein, termed VCP, which showed none of the characteristics of a peptide hormone precursor (PMID:1382975). Defects in VCP are the cause of inclusion body myopathy with early-onset Paget disease and frontotemporal dementia (IBMPFD) and amyotrophic lateral sclerosis type 14 with or without frontotemporal dementia (ALS14). VCP has a calculated molecular weight of 89 kDa and an apparent molecular weight of 90-100 kDa (PMID: 15732117, 1382975).

## Notable Publications

Author	Pubmed ID	Journal	Application
Xiao-Jing Li	33495516	Acta Pharmacol Sin	WB

## Storage

**Storage:**

Store at -20°C. Stable for one year after shipment.

**Storage Buffer:**

PBS with 0.02% sodium azide and 50% glycerol pH 7.3.

Aliquoting is unnecessary for -20°C storage

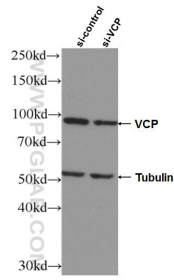
For technical support and original validation data for this product please contact:

T: 1 (888) 4PTGLAB (1-888-478-4522) (toll free in USA), or 1(312) 455-8498 (outside USA)

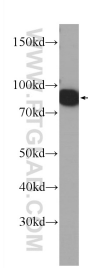
E: proteintech@ptglab.com  
W: ptglab.com

**This product is exclusively available under Proteintech Group brand and is not available to purchase from any other manufacturer.**

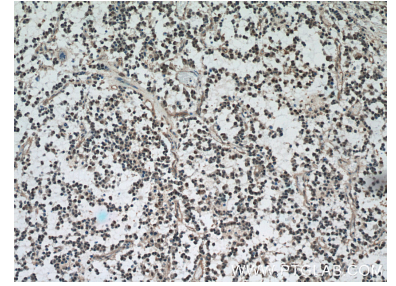
## Selected Validation Data



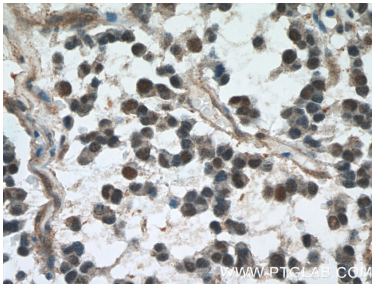
WB result of VCP antibody (60316-1-Ig; 1:5000; incubated at room temperature for 1.5 hours) with sh-Control and sh-VCP transfected HeLa cells.



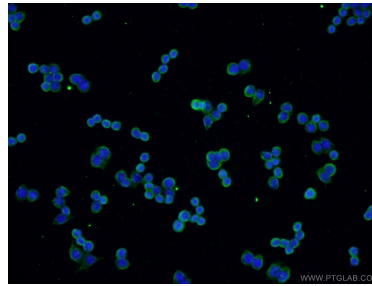
RAW 264.7 cells were subjected to SDS PAGE followed by western blot with 60316-1-Ig (VCP Antibody) at dilution of 1:1000 incubated at room temperature for 1.5 hours.



Immunohistochemical analysis of paraffin-embedded human gliomas tissue slide using 60316-1-Ig (VCP Antibody) at dilution of 1:50 (under 10x lens).



Immunohistochemical analysis of paraffin-embedded human gliomas tissue slide using 60316-1-Ig (VCP Antibody) at dilution of 1:50 (under 40x lens).



Immunofluorescent analysis of RAW 264.7 cells using 60316-1-Ig (VCP antibody) at dilution of 1:50 and Alexa Fluor 488-conjugated AffiniPure Goat Anti-Mouse IgG (H+L).